



TASMANIAN TRANSPORTABLE HOMES
LET US DELIVER YOUR NEXT HOME





Our Units

Here at **Tasmanian Transportable Homes** (a division of **Homes4you**) we design and build high-quality, transportable homes in our **Launceston** factory. At the heart of **Tasmanian Transportable Homes** innovative methodology is the integration and control of all phases. **Tasmanian Transportable Homes** use **Tasmanian** made products wherever possible and uses high-strength Australian-sourced structural **Truecore** steel framing.



Sleepouts



2nd Dwellings



First Home Buying



Farm Accommodation



**Holiday Park
Accommodation**



Cabins



**Commercial Office
Space**



Airbnb

2



The TT Homes Process

1. Choose a Design **Tassie owned & made**

Choose from any of our standard floor plans, or share your ideas with our in-house designer for a custom layout that suits. Our options range from a small open plan studio, up to a self-contained 2 bedroom home. All options are competitively priced - no budget blowouts here at **Tasmanian Transportable Homes**. Our units are constructed using top-quality, locally-sourced materials. We're proud to say that the primary structure is made of **Truecore steel framing**.

2. Agreement **Let's get the ball rolling**

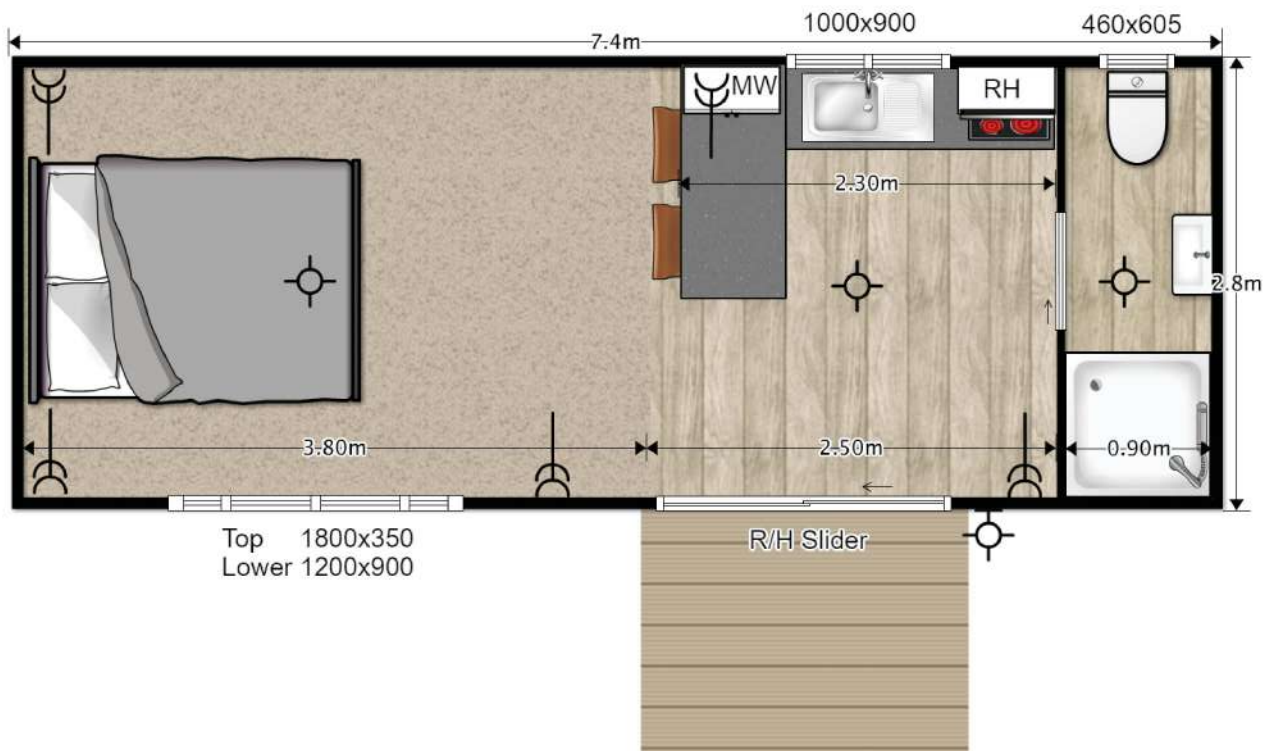
Upon deciding which unit is the right fit, we immediately put steps in place to 'get the ball rolling'. Our goal is to get your new purchase to you in a timely and efficient manner. Upon receiving your deposit we will work with you to finalise the specifications and sales agreement.

3. Production **The nuts and bolts**

Now we are really moving forward! All our units are made-to-order. Our **office in Launceston** houses a production team of highly-skilled employees, and we are committed to constructing your unit to the highest of standards. **Tasmanian Transportable Homes** are the industry benchmark when it comes to manufacturing. Your new unit leaves our hub professionally certified and ready for use.

4. Delivery **It's all yours!**

We'll liaise with you directly to organise a time that works for you, and you'll know exactly what is going to happen and when. The delivery and installation team are a crucial part of our business, and you can have peace of mind knowing your delivery is taken seriously. Occasionally an installation may require additional services which we'll organise to keep the process hassle-free. When we leave, it's all yours - step inside and make yourself at **home**.



7.4 Open Plan Studio

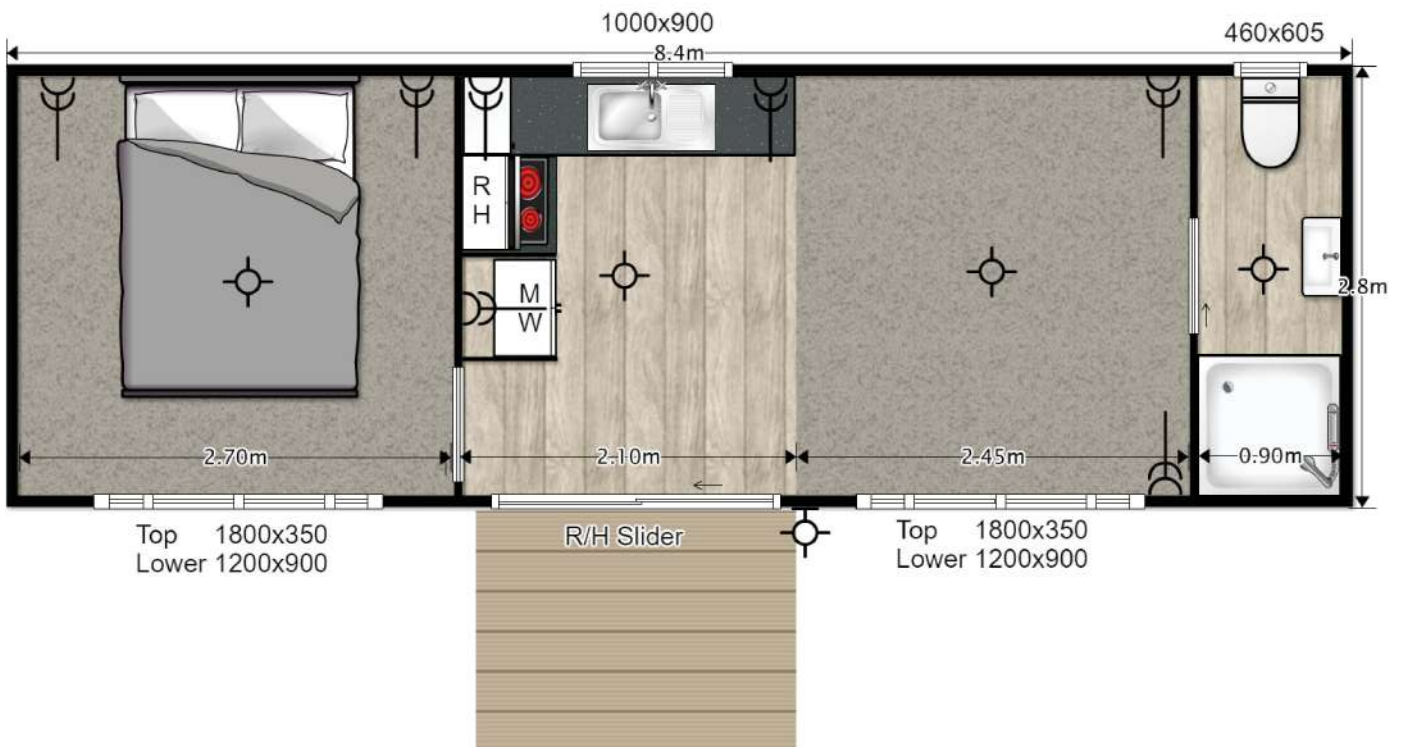
7.4 x 2.8M (ON SKIDS) | PRICE: **\$76,539** INC GST Ex-Factory

Spec List

- Approximately **20.7m²** in size
- Electrical certificates
- **6** x double power points.
- 3x internal lights & 1x external light
- **3** x Double glazed windows
- **1** x Double glazed sliding door
- Base - 2x galvanised steel skids
- Carpet & vinyl
- 900 x 900mm shower
- **Back to wall** Toilet
- Bathroom vanity & extractor fan
- TV outlet and wall bracket
- Towel holder & toilet roll holder
- 50m waste pipe
- 16 Amp power supply (15m ext. lead)
- Kitchen with breakfast bar
- 2 burner electric hob
- Rangehood
- Splashback
- **3Kw** heat pump
- Underfloor Insulation
- Double Glazing

Optional Extras

- Wardrobes
- All vinyl (no carpet)
- Extra window
- Extra power points
- **Fly Screens**
- Fridge
- **Timber** deck
- Gas cooking upgrade



8.4 One Bedroom

8.4 x 2.8M (ON SKIDS) | PRICE: **\$86,056** Inc GST Ex-Factory

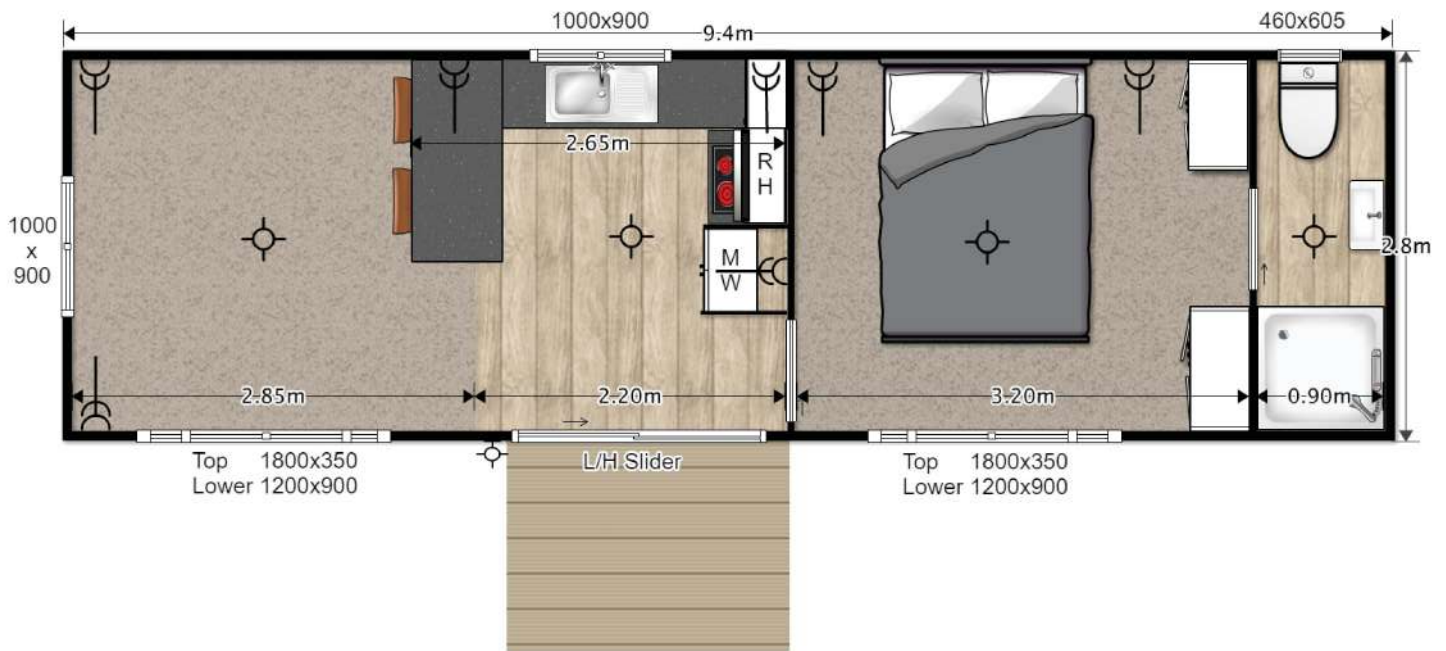
Spec List

- Approximately **23.5m²** in size
- Electrical certificates
- **6x** double power points
- 4x internal lights & 1x external light
- 4 x windows 1 x **Sliding door**
- Carpet & vinyl
- 900 x 900mm shower
- **Back to wall** Toilet
- Bathroom vanity & extractor fan
- Towel holder & toilet roll holder
- 50m waste pipe
- Kitchen with fridge tower
- Smoke alarm
- Base = 2x galvanised steel skids
- 16 Amp power supply (15m ext. lead)
- Double glazing
- Underfloor insulation
- 2 burner electric hob
- Rangehood
- Splashback
- **3 KW** heat pump
- TV Outlet and wall bracket

Optional Extras

- Wardrobes
- All vinyl (no carpet)
- Extra window
- Extra power points
- **Fly Screens**
- Fridge
- **Timber** deck
- Gas cooking upgrade

5



9.4 One Bedroom Superior

9.4 x 2.8M (ON SKIDS) | PRICE: **\$95,573** Inc GST Ex- Factory

Spec List

- Approximately **26.3m²** in size
- Electrical certificates
- 7x double power points
- 4x internal lights & 1x external light
- **5 x windows 1 x Sliding door**
- Carpet & vinyl
- 900 x 900mm shower
- **Back to wall Toilet**
- Bathroom vanity & extractor fan
- Towel holder & toilet roll holder
- 50m waste pipe
- Kitchen with fridge tower & breakfast bar
- Smoke alarm
- Base = 2x galvanised steel skids
- 16 Amp power supply (15m ext. lead)
- Double glazing
- Underfloor insulation
- 2burnerelectrichob
- Rangehood
- Splashback
- **3Kw** heat pump
- TV outlet and wall bracket

Optional Extras

- Wardrobes
- All vinyl (no carpet)
- Extra window
- Extra power points
- **Insect Screens**
- Fridge
- **Timber deck**
- Gas cooking upgrade



10.4 Two Bedroom

10.4 x 2.8M (ON SKIDS) | PRICE: **\$105,090** Inc GST Ex- Factory

Spec List

- Approximately **29.1m²** in size
- Electrical certificates
- 9x double power points
- 6x internal lights & 1x external light
- 5 x windows 1 x sliding door
- Carpet & vinyl
- 900 x 900mm shower
- **Back to wall** Toilet
- Bathroom vanity & extractor fan
- Towel holder & toilet roll holder
- 50m waste pipe
- Smoke alarm
- Base = 2x galvanised steel skids
- 16 Amp power supply (15m ext. lead)
- Double glazing
- Underfloor insulation
- 2 burner electric hob
- Rangehood
- Splashback
- **3 KW** heat pump
- TV outlet and wall bracket

Optional Extras

- Wardrobes
- All vinyl (no carpet)
- Extra window
- Extra power points
- insect fly screens
- Fridge
- **Timber** deck
- Gas cooking upgrade



**OUR BEST
SELLER!**

10.4 Deluxe One Bedroom

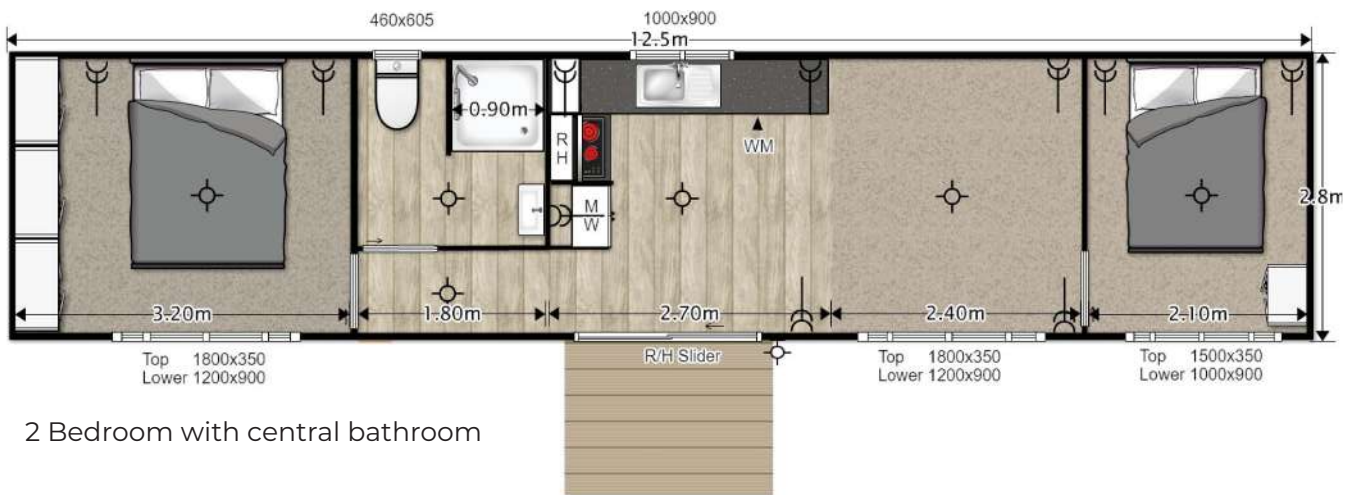
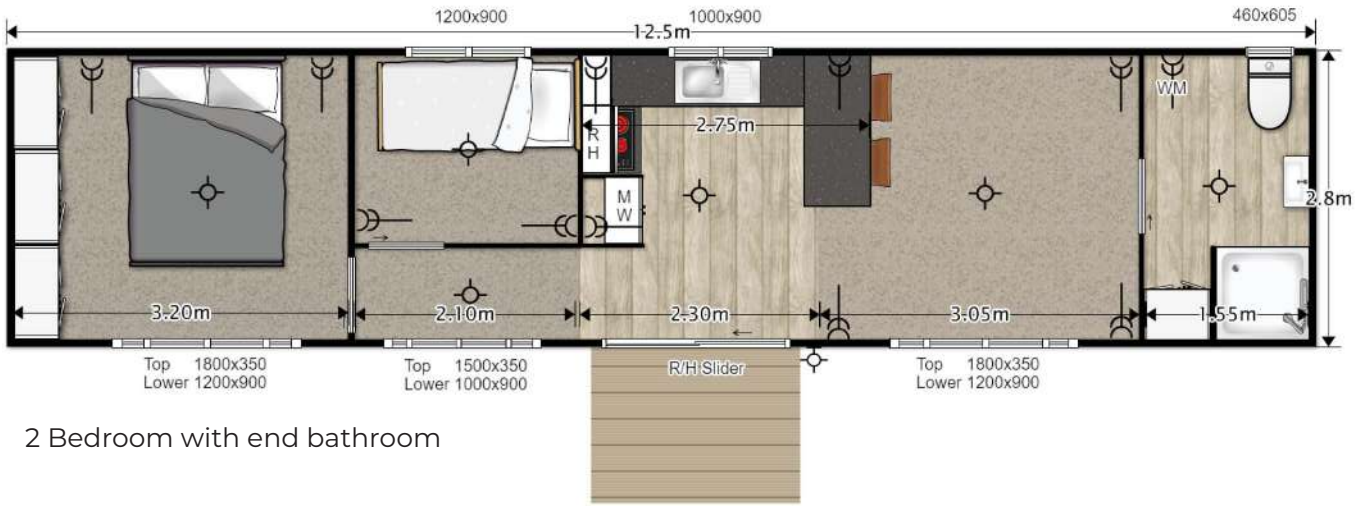
10.4 x 2.8M (ON SKIDS) | PRICE: **\$105,090** Inc GST Ex-Factory

Spec List

- Approximately **29.1m²** in size
- Electrical certificates
- 9x double power points
- 4x internal lights & 1x external light
- 4 x windows 1 x sliding door
- Carpet & vinyl
- 900 x 900mm shower
- **Back to wall** Toilet
- Bathroom vanity & extractor fan
- Towel holder & toilet roll holder
- 50m waste pipe
- Upgraded kitchen with breakfast bar & extra storage
- Oven
- 4 burner electric hob
- Rangehood
- Splashback
- Large bathroom with plumbing/wiring for washing machine & storage cabinet
- Smoke alarm
- Base = 2x galvanised steel skids
- 32 Amp power supply (15m ext. lead)
- **3kw** for heat pump
- Double glazing
- Underfloor insulation
- TV outlet and wall bracket

Optional Extras

- All vinyl (no carpet)
- Extra window
- Extra power points
- Insect Fly screens
- Fridge
- **Timber deck**
- Gas cooking upgrade



12.5 Deluxe Two Bedroom

12.5 x 2.8M (ON SKIDS) | PRICE: **\$125,145** Inc GST Ex-Factory

Spec List

- Approximately **35m²** in size
- Electrical certificates
- 10x double power points
- 6x internal lights & 1x external light
- **5 x windows 1 x sliding door**
- Carpet & vinyl
- 900 x 900mm shower
- **Back to wall** Toilet
- Bathroom vanity & extractor fan
- Towel holder & toilet roll holder
- 50m waste pipe
- Upgraded kitchen with breakfast bar & extra storage
- Oven
- 4 burner electric hob
- Rangehood
- Splashback
- Large bedroom with 3x wardrobes
- Large bathroom with plumbing/wiring for washing machine & storage cabinet
- Smoke alarm
- Base = 2x galvanised steel skids
- 32 Amp power supply (15m ext. lead)
- Double glazing
- Underfloor insulation
- TV outlet & wall mounting bracket
- **5Kw** heat pump

Optional Extras

- All vinyl (no carpet)
- Extra window
- Extra power points
- insect **Fly** screens
- Fridge
- **Timber deck**
- Gas cooking upgrade



12.5 x 3.4 Deluxe Two Bedroom

12.5 x 3.4M (ON SKIDS) | PRICE: **\$150,637** Inc GST Ex-Factory

Spec List

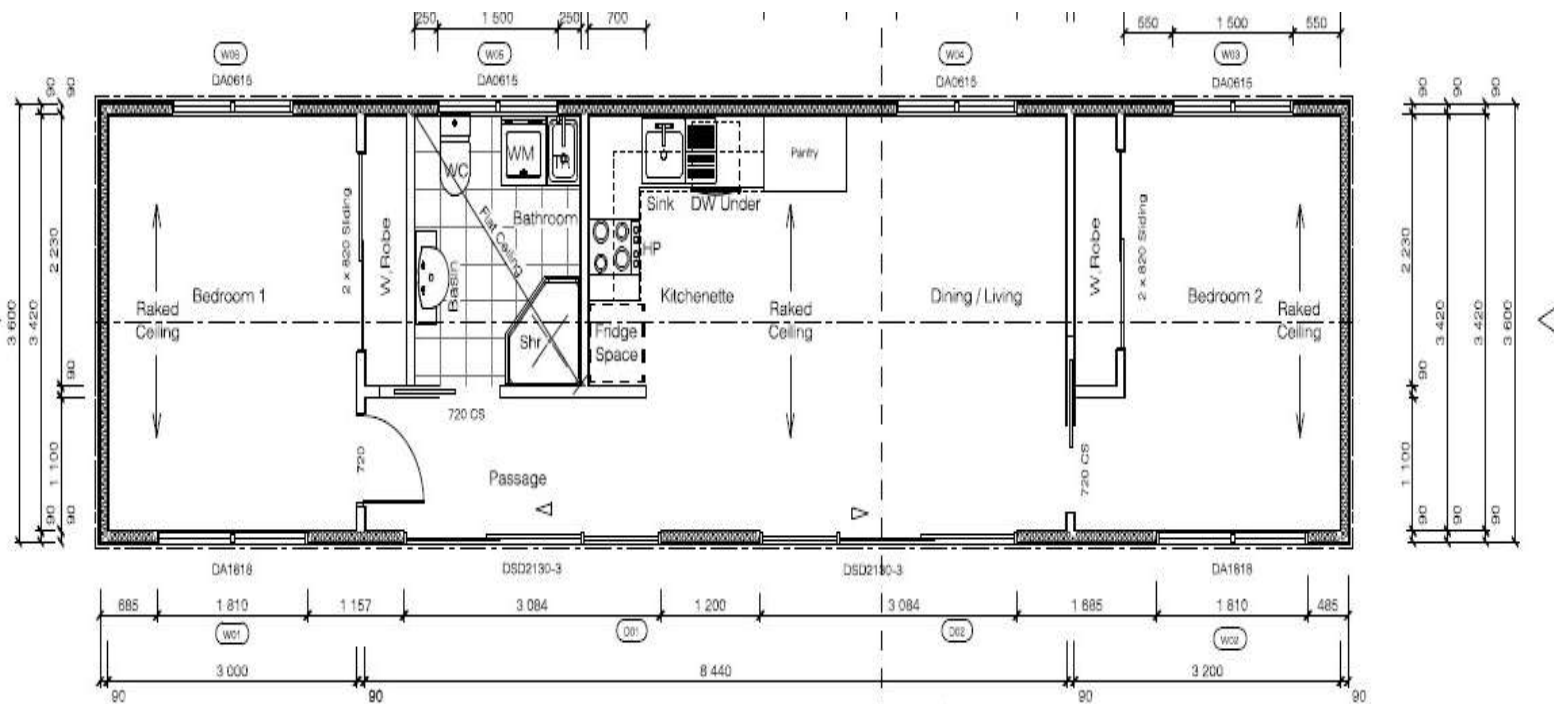
- **Extra wide**
- Approximately **42.5m²** in size
- Electrical certificates
- 10x double power points
- 6x internal lights & 1x external light
- **5 x windows 1 x sliding door**
- Carpet & vinyl
- 900 x 900mm shower
- **Back to wall Toilet**
- Bathroom vanity & extractor fan
- Towel holder & toilet roll holder
- 50m waste pipe
- Large kitchen with long breakfast bar & extra storage
- Full length pantry
- Oven
- 4 burner electric hob
- Rangehood
- Splashback
- Space under the kitchen bench for front loading washing machine
- Large bedroom with 4x wardrobes
- Centralised bathroom with a storage cabinet
- Smoke alarm
- Base = 2x galvanised steel skids
- 32 Amp power supply (15m ext. lead)
- Double glazing
- ..
- Underfloor insulation
- TV outlet & wall mounting bracket
- **5 Kw** heat pump

Optional Extras

- All vinyl (no carpet)
- Extra window
- Extra power points
- Insect fly screens
- Fridge
- **Timber deck**
- Gas cooking upgrade

10

**Our 15 Mtr long x 3.6 Mtr wide Extra Large Two Bedroom Dwelling
with Skillion roof & raked ceilings**



\$170,980 Inc GST Ex-Factory

NOTE:

All pricing in this brochure does not include the following
and are all EX-Factory pricing

- 1) Council Fees
- 2) Services connections, Steel piers & footings , Site Plans, BAL fire Reports, Soil test reports, septic tank systems if required.
- 3) Any transport or Crane Hire

Standard Transportable Inclusions

- 1) Skillion colourbond roof, Facia & gutter in your choice of standard colourbond colours.
- 2) Vertical Colourbond cladding in your choice of standard colorbond colours.
- 3) Double glazed aluminium windows & doors.
- 4) Steel C Section Bearers C15024 & Joists C15019.
- 5) Australian Truecore Hi Tensile Steel Framing.
- 6) Under floor insulation.
- 7) Yellow or red tongue structural flooring.
- 8) All electrical and plumbing completed in factory ready to connect on site.
- 9) Wall batts insulation R2.5
- 10) Ceiling insulation as required.
- 11) Anticon R1.3 roofing blanket insulation under roofing iron.
- 12) 10mm plasterboard finish throughout and wet area plasterboard to wet areas.
- 13) Fully painted throughout in one colour.
- 14) 66mm x 18mm DAR square skirting and architraves eazitrim.
- 15) Humes readicote plain internal doors.
- 16) Fully tiled shower and floor areas in bathrooms/wet areas.
- 17) Reverse cycle heat pump to living area.
- 18) Polytech kitchen cupboards or similar as per plan.
- 19) 900mmx900mm clear glass shower cubicle & poly base.
- 20) 750mm builders white vanity.
- 21) Aztec or similar back to wall toilet suite.
- 22) Stainless steel kitchen sink.
- 23) Wall mounted cycle through rangehood.
- 24) Euro 60cm ceramic cooktop or similar.
- 25) Euro 60cm under bench oven.
- 26) slimline laundry trough if applicable or place in kitchen for washing machine
- 27) Prebuilt freestanding cupboards if shown on plans.
- 28) Floor coverings: Berber carpet to bedrooms and vinyl to living areas.
- 29) Set of Concept Plans for Council Meetings.

Optional Extras Prepared By Tasmania Transportable Home by quotation if required.

- 1) Timber decks.
- 2) Timber Stairs.
- 3) Custom designs.
- 4) Site preparations.
- 5) Power & Sewage connections.
- 6) Steel piers & Concrete base.
- 7) Site Plans\ Engineering Plans.
- 8) bal fire rating.
- 9) Soil test report.
- 10) Site levels.
- 11) Upgrade to 3.4 meter wide building average from \$12,000
- 12) Upgrade to 3.6 wide building average from \$16,000
- 13) Waste water report for sewage if no sewage on site.

Cant find what you are after let us Design & Construct
your next Transportable Home Together



Note: Image for illustrative purposes only. Featured Weathertex cladding is not included in standard pricing. All homes come with standard Colorbond or Weatherboard cladding unless otherwise specified.

Call Suresh: 0438 002 261

E: sales@homes4youtas.com.au

Office: 132 Forster St Invermay TAS 7248

NOTE

*Pricing in this brochure does not include: Site costs, Site Plans \ Engineering Plans, Council fees, Crane or Transport costs. Prices may vary without notice subject to fluctuations in supply prices.