

# HOMES4YOU

Our Business Specialises in custom built homes, Project homes, Granny flats, Bathroom pods, Modular buildings & DIY kit homes and have designed/supplied or built over 200 homes for locals since inception.

- A new Home can be exactly what YOU the client want it to be.
- Mix & match design and flexibility allows limitless combinations of home styles and internal layouts.
- Skilled designers, engineers and our manufacturing team will meet your specific design requirements.



**HOMES4YOU**  
YOUR HOME. YOUR CHOICE



## Features

- Flexibility allows you to change internal plans and move walls, windows and doors. From the foundations to the roof, the home is truly individualised to your complete requirements or simply choose one of our project homes, modular buildings or granny flat designs and make the changes required to suit your lifestyle.
- Homes can range from the very basic - such as a one bedroom granny flat, to large homesteads with many bedrooms or a prestigious architecturally designed fully completed home.

## Contents

### One Bedroom

Waratah.....	<b>p3</b>
Swansea.....	<b>p3</b>
Stanley.....	<b>p3</b>

### Two Bedroom

Wynyard.....	<b>p4</b>
Hideaway.....	<b>p4</b>
Whitemark.....	<b>p4</b>
Sorell.....	<b>p5</b>
Avoca.....	<b>p5</b>

### Three Bedroom

Birrallee.....	<b>p6</b>
Brighton.....	<b>p6</b>
Dover.....	<b>p6</b>
Dilston.....	<b>p7</b>
Easy Start113.....	<b>p7</b>
Easy Start132.....	<b>p7</b>
Kettering.....	<b>p8</b>
Latrobe.....	<b>p8</b>
Legana.....	<b>p8</b>
Longford.....	<b>p9</b>
Norwood.....	<b>p9</b>
One163.....	<b>p9</b>
One164.....	<b>p10</b>
One165.....	<b>p10</b>
One170.....	<b>p10</b>
One185.....	<b>p11</b>
One186.....	<b>p11</b>
The Range Home 5.....	<b>p11</b>
One197.....	<b>p12</b>
One204.....	<b>p12</b>
Orford.....	<b>p12</b>
Perth.....	<b>p13</b>
Railton.....	<b>p13</b>
The Range Home 1.....	<b>p13</b>
The Range Home 2.....	<b>p14</b>

The Range Home 3.....	<b>p14</b>
The Range Home 4.....	<b>p14</b>
Richmond.....	<b>p15</b>
Scottsdale.....	<b>p15</b>
Settler.....	<b>p15</b>
Summerhill(Duplex).....	<b>p16</b>
Tasman.....	<b>p16</b>
Two299.....	<b>p16</b>
One175.....	<b>p17</b>
Eaststart146.....	<b>p17</b>

### Four Bedroom

One184.....	<b>p18</b>
One190.....	<b>p18</b>
Beaumaris.....	<b>p19</b>
Bridport.....	<b>p19</b>
Deloraine.....	<b>p19</b>
Devonport.....	<b>p20</b>
Dunalley.....	<b>p20</b>
Entally.....	<b>p20</b>
Evandale.....	<b>p21</b>
Flinders.....	<b>p21</b>
Franklin.....	<b>p21</b>
Homestead.....	<b>p22</b>
Huon.....	<b>p22</b>
Huonville.....	<b>p22</b>
Kempton.....	<b>p23</b>
Lilydale.....	<b>p23</b>
Meadows.....	<b>p23</b>
Newstead.....	<b>p24</b>
Oatland.....	<b>p24</b>
One172.....	<b>p24</b>
One173.....	<b>p25</b>
One177.....	<b>p25</b>
One179.....	<b>p25</b>
One197.....	<b>p26</b>
One193.....	<b>p26</b>

One194.....	<b>p26</b>
One195.....	<b>p27</b>
One195.....	<b>p27</b>
One199.....	<b>p27</b>
One201.....	<b>p28</b>
One205.....	<b>p28</b>
One233.....	<b>p28</b>
One241.....	<b>p29</b>
One244.....	<b>p29</b>
One257.....	<b>p29</b>
One267.....	<b>p30</b>
One291.....	<b>p30</b>
One299.....	<b>p30</b>
One350.....	<b>p31</b>
Prospect.....	<b>p31</b>
Riverside.....	<b>p31</b>
Ross.....	<b>p32</b>
Sassafras.....	<b>p32</b>
Sheffield.....	<b>p32</b>
Strahan.....	<b>p33</b>
Two291.....	<b>p33</b>
Westbury.....	<b>p33</b>
One193.....	<b>p34</b>
One172.....	<b>p34</b>

### Modular

1 bed 1 - Arthur.....	<b>p36</b>
1 bed 2 - Pieman.....	<b>p36</b>
1 bed 3 - Cascade.....	<b>p36</b>
2 bed 1 - Franklin.....	<b>p37</b>
2 bed 2 - Meander.....	<b>p37</b>
2 bed 3 - Huon.....	<b>p37</b>
3 bed 1 - Tamar.....	<b>p38</b>
3 bed 2 - Gordon.....	<b>p38</b>
3 bed 3 - Derwen.....	<b>p38</b>
<b>Notes.....</b>	<b>p39</b>

## Waratah

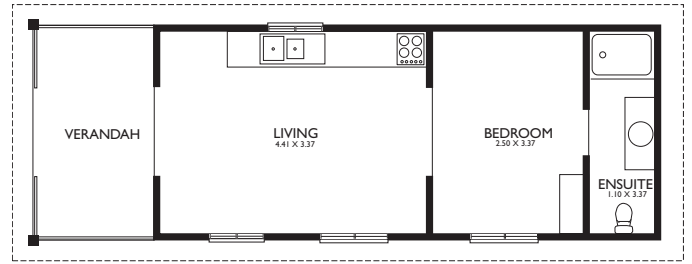


### Features

- 1 Bedroom
- Verandah
- Open Living
- Ensuite

### Area Specifications

<b>Living Area:</b>	29.7m <sup>2</sup>
<b>Verandah Area:</b>	7.1m <sup>2</sup>
<b>Carport Area:</b>	0.0m <sup>2</sup>
<b>Frontage:</b>	3.55m <sup>2</sup>
<b>Total Area Under Roof:</b>	36.8m <sup>2</sup>



## Swansea

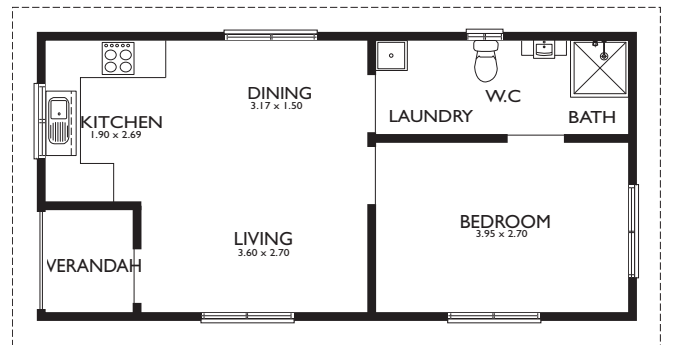


### Features

- 1 Bedroom
- Verandah
- Open Living
- Ensuite

### Area Specifications

<b>Living Area:</b>	39.1m <sup>2</sup>
<b>Verandah Area:</b>	2.5m <sup>2</sup>
<b>Carport Area:</b>	0.0m <sup>2</sup>
<b>Frontage:</b>	4.475m <sup>2</sup>
<b>Total Area Under Roof:</b>	41.6m <sup>2</sup>



## Stanley

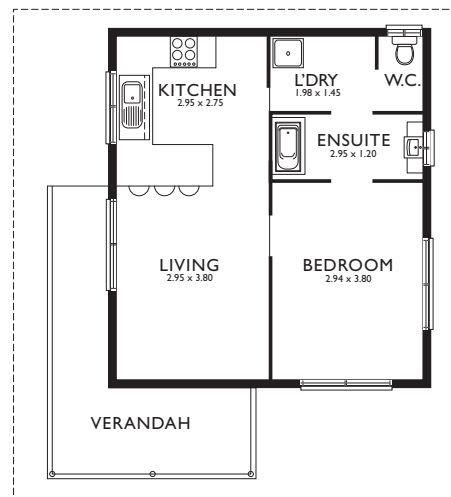


### Features

- 1 Bedroom
- Verandah
- Open Living
- Ensuite

### Area Specifications

<b>Living Area:</b>	41.9m <sup>2</sup>
<b>Verandah Area:</b>	5.1m <sup>2</sup>
<b>Carport Area:</b>	0.0m <sup>2</sup>
<b>Frontage:</b>	6.158m <sup>2</sup>
<b>Total Area Under Roof:</b>	47m <sup>2</sup>



## Wynyard

2  1 

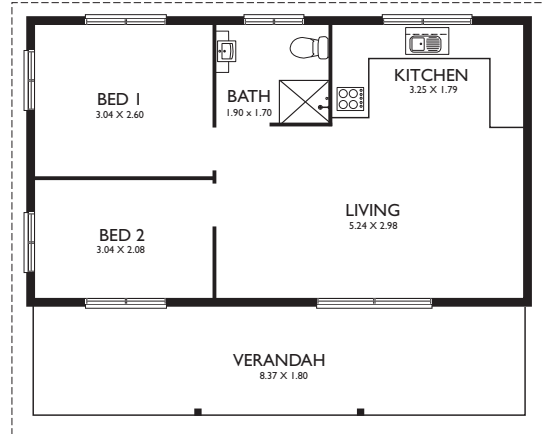


### Features

- 2 Bedrooms
- Verandah
- Open Living

### Area Specifications

<b>Living Area:</b>	44.5m <sup>2</sup>
<b>Verandah Area:</b>	15.1m <sup>2</sup>
<b>Carpport Area:</b>	0.0m <sup>2</sup>
<b>Frontage:</b>	8.37m <sup>2</sup>
<b>Total Area Under Roof:</b>	59.6m <sup>2</sup>



## Hideaway

2  1 

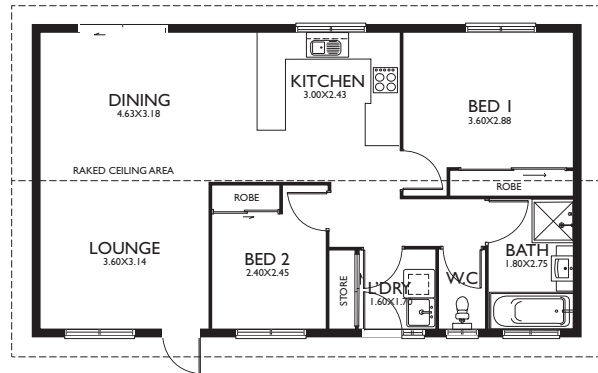


### Features

- 2 Bedrooms
- Verandah
- Open Living
- Separate Toilet and Laundry

### Area Specifications

<b>Living Area:</b>	74.75m <sup>2</sup>
<b>Verandah Area:</b>	0.0m <sup>2</sup>
<b>Carpport Area:</b>	0.0m <sup>2</sup>
<b>Frontage:</b>	11.5m <sup>2</sup>
<b>Total Area Under Roof:</b>	74.75m <sup>2</sup>



## Whitemark

2  1 

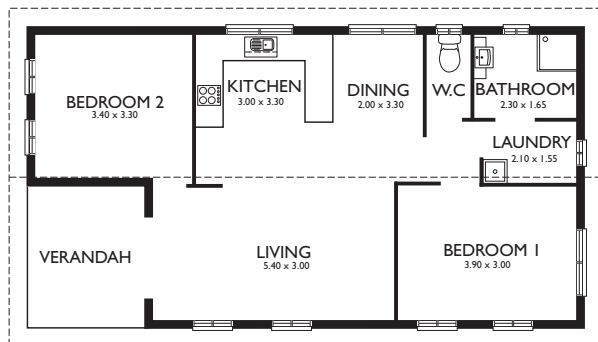


### Features

- 2 Bedrooms
- Verandah
- Open Living
- Separate Toilet and Laundry

### Area Specifications

<b>Living Area:</b>	72.1m <sup>2</sup>
<b>Verandah Area:</b>	7.4m <sup>2</sup>
<b>Carpport Area:</b>	0.0m <sup>2</sup>
<b>Frontage:</b>	6.60m <sup>2</sup>
<b>Total Area Under Roof:</b>	79.5m <sup>2</sup>



## Sorell

2  1 



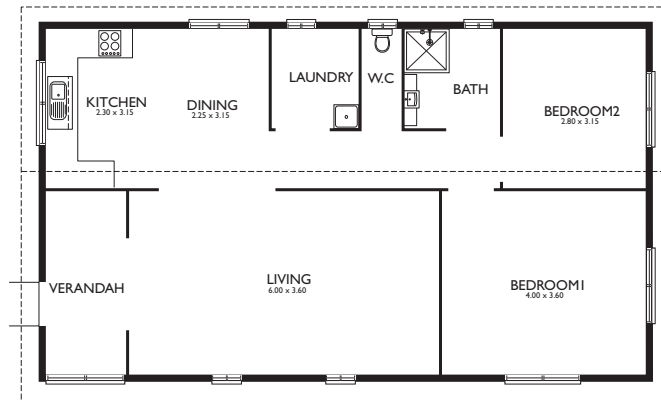
### Features

- 2 Bedrooms
- Verandah
- Open Living

### Area Specifications

**Living Area:** 77.3m<sup>2</sup>  
**Verandah Area:** 6.7m<sup>2</sup>  
**Carport Area:** 0.0m<sup>2</sup>  
**Frontage:** 7.0m<sup>2</sup>

**Total Area Under Roof:** 84.0m<sup>2</sup>



## Avoca

2  1 



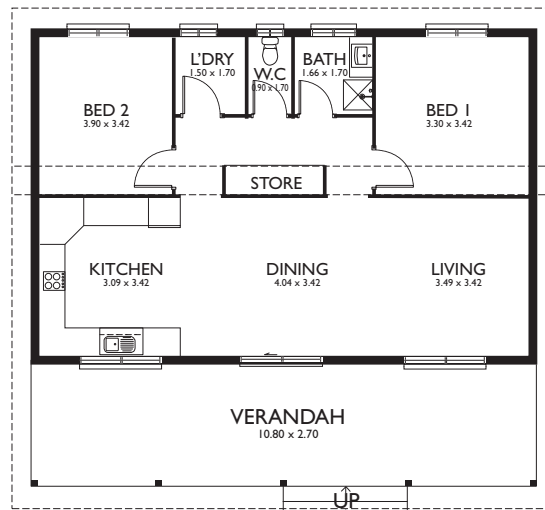
### Features

- 2 Bedrooms
- Verandah
- Open Living
- Separate Toilet and Laundry

### Area Specifications

**Living Area:** 76.6m<sup>2</sup>  
**Verandah Area:** 29.2m<sup>2</sup>  
**Carport Area:** 0.0m<sup>2</sup>  
**Frontage:** 10.8m<sup>2</sup>

**Total Area Under Roof:** 105.8m<sup>2</sup>



# Three Bedroom

## Birralee

3  1  1 

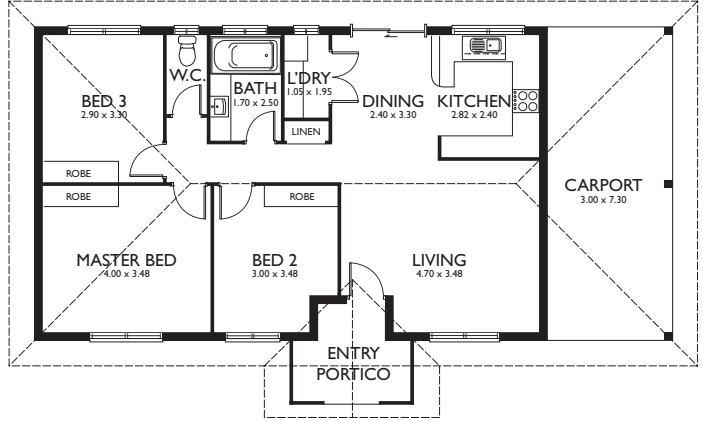


### Features

- 3 Bedrooms
- Open Living
- Separate Toilet and Laundry
- Carport

### Area Specifications

**Living Area:** 92.4m<sup>2</sup>  
**Verandah Area:** 5.7m<sup>2</sup>  
**Carport Area:** 22.7m<sup>2</sup>  
**Frontage:** 15.38m<sup>2</sup>  
**Total Floor Area:** 120.8m<sup>2</sup>



## Brighton

3  1 

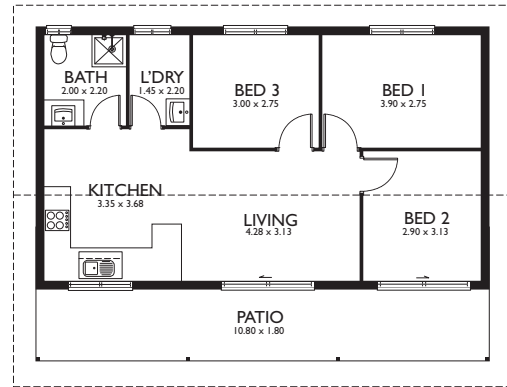


### Features

- 3 Bedrooms
- Open Living
- Separate Laundry
- Carport

### Area Specifications

**Living Area:** 66.4m<sup>2</sup>  
**Verandah Area:** 19.4m<sup>2</sup>  
**Carport Area:** 0.0m<sup>2</sup>  
**Frontage:** 10.8m<sup>2</sup>  
**Total Floor Area:** 85.8m<sup>2</sup>



## Dover

3  2  2 

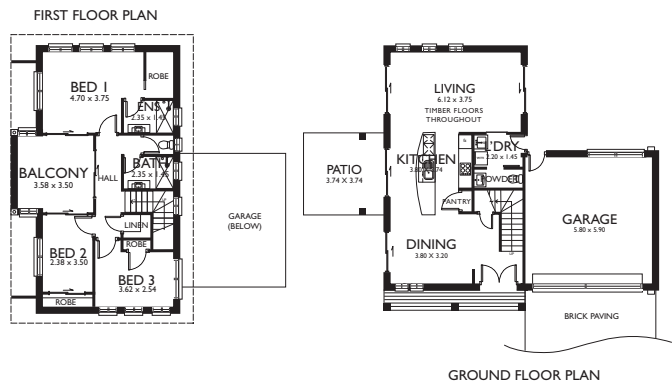


### Features

- 3 Bedrooms
- 2 Bathrooms
- Balcony
- Open Living
- Double Lock-up Garage

### Area Specifications

**Living Area:** 127.7m<sup>2</sup>  
**Verandah Area:** 20.4m<sup>2</sup>  
**Balcony Area:** 12.5m<sup>2</sup>  
**Carport Area:** 34.2m<sup>2</sup>  
**Frontage:** 11.9m<sup>2</sup>  
**Total Floor Area:** 194.8m<sup>2</sup>



# Three Bedroom

## Dilston

3 2 2

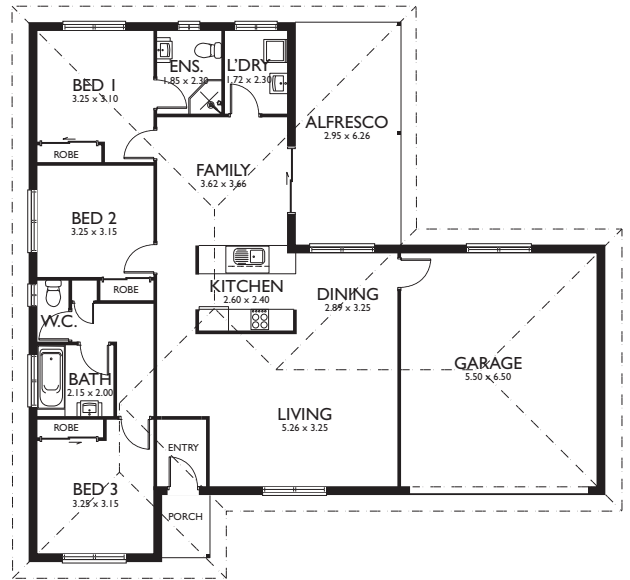


### Features

- 3 Bedrooms
- 2 Bathrooms
- Alfresco
- 2 Living
- Double Lock-up Garage

### Area Specifications

<b>Living Area:</b>	128.7m <sup>2</sup>
<b>Porch Area:</b>	2.4m <sup>2</sup>
<b>Alfresco Area:</b>	18.5m <sup>2</sup>
<b>Carpport Area:</b>	35.8m <sup>2</sup>
<b>Frontage:</b>	16.2m <sup>2</sup>
<b>Total Floor Area:</b>	185.4m <sup>2</sup>



## Easy Start 113

3 2 1

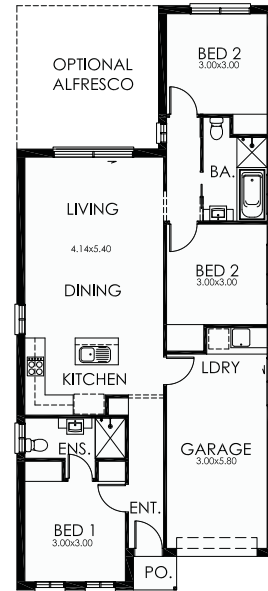


### Features

- 3 Bedrooms
- Large Living & Dining Area
- Single Lock-up Garage
- Ensuite & WIR

### Area Specifications

<b>Living Area:</b>	91.17m <sup>2</sup>
<b>Porch Area:</b>	1.24m <sup>2</sup>
<b>Garage:</b>	20.99m <sup>2</sup>
<b>Total:</b>	113.41m <sup>2</sup>
<b>Width:</b>	7.71m
<b>Depth:</b>	17.44m



## Easy Start 132

3 2 1

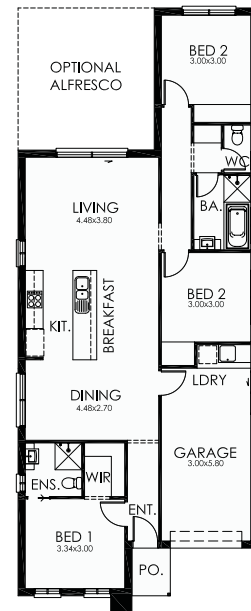


### Features

- 3 Bedrooms
- Large Living & Dining Area
- Single Lock-up Garage
- Ensuite & WIR

### Area Specifications

<b>Living Area:</b>	109.07m <sup>2</sup>
<b>Porch Area:</b>	2.06m <sup>2</sup>
<b>Garage:</b>	21.18m <sup>2</sup>
<b>Total:</b>	132.32m <sup>2</sup>
<b>Width:</b>	8.05m
<b>Depth:</b>	20.44m



# Three Bedroom

## Kettering

3 2 2

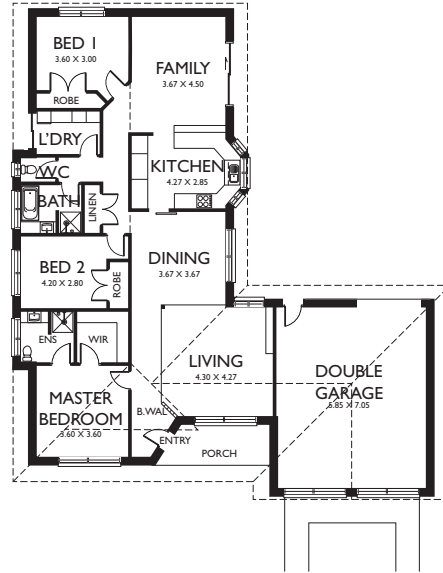


### Features

- 3 Bedrooms
- Large Living & Dining Area
- Double Lock-up Garage
- Separate Lounge
- Ensuite & WIR

### Area Specifications

**Living Area:** 192.89m<sup>2</sup>  
**Verandah Area:** 0.0m<sup>2</sup>  
**Carpport Area:** 41.24m<sup>2</sup>  
**Frontage:** 16.125m  
**Total Floor Area:** 234.13m<sup>2</sup>



## Latrobe

3 2

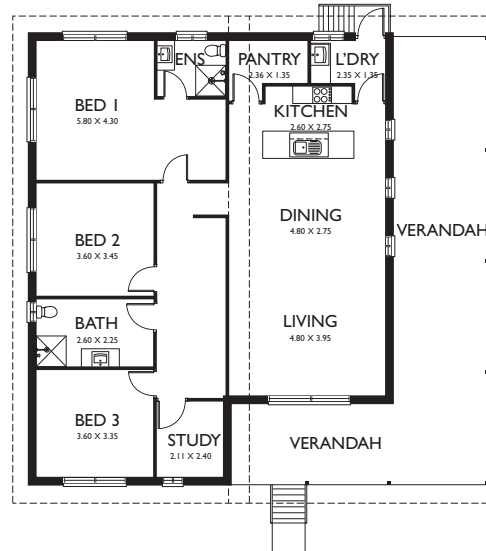


### Features

- 3 Bedrooms
- Large Living & Dining Area
- Study
- Ensuite

### Area Specifications

**Living Area:** 132.2m<sup>2</sup>  
**Verandah Area:** 52.9m<sup>2</sup>  
**Carpport Area:** 0.0m<sup>2</sup>  
**Frontage:** 14.758m  
**Total Floor Area:** 185.1m<sup>2</sup>



## Legana

3 1 1

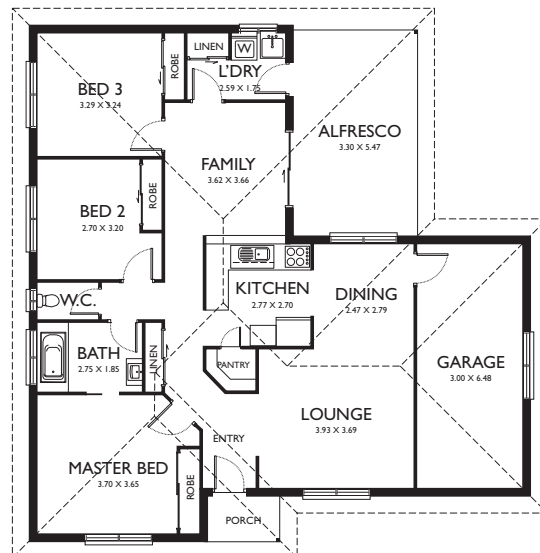


### Features

- 3 Bedrooms
- Large Living & Dining Area
- Alfresco
- Ensuite

### Area Specifications

**Living Area:** 116.1m<sup>2</sup>  
**Porch Area:** 2.3m<sup>2</sup>  
**Alfresco Area:** 18.1m<sup>2</sup>  
**Carpport Area:** 21.3m<sup>2</sup>  
**Frontage:** 13.4m  
**Total Floor Area:** 157.8m<sup>2</sup>





# Three Bedroom

## Longford

3  1  1 

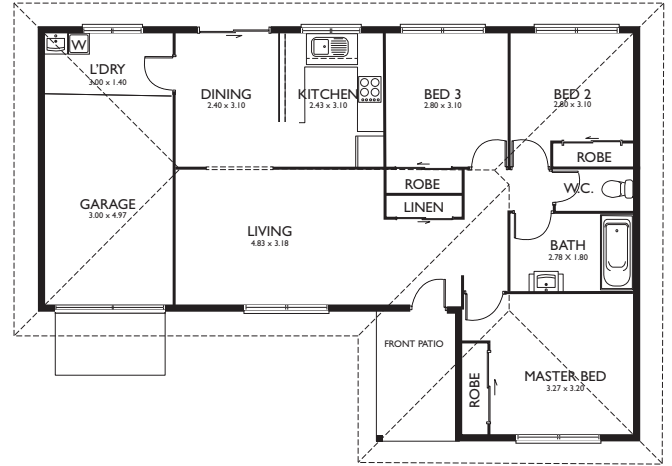


### Features

- 3 Bedrooms
- Open Living
- Separate Laundry
- Garage

### Area Specifications

<b>Living Area:</b>	89.1m <sup>2</sup>
<b>Porch Area:</b>	5.0m <sup>2</sup>
<b>Alfresco Area:</b>	14.9m <sup>2</sup>
<b>Carport Area:</b>	14.9m <sup>2</sup>
<b>Frontage:</b>	14.2m
<b>Total Floor Area:</b>	109.0m <sup>2</sup>



## Norwood

3  2 

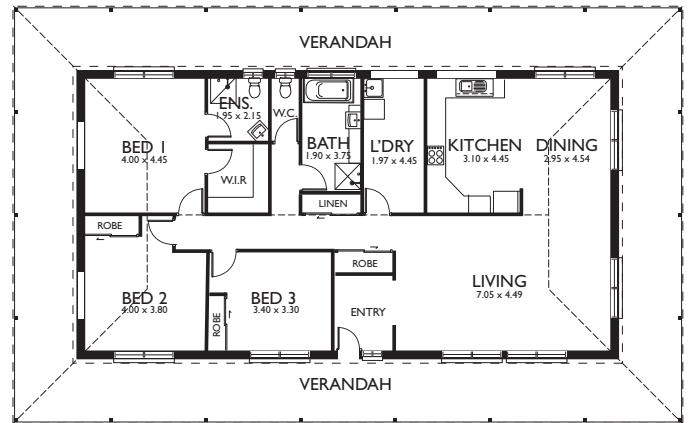


### Features

- 3 Bedrooms
- Open Living
- Separate Laundry
- Ensuite and Walk in Robe

### Area Specifications

<b>Living Area:</b>	160.25m <sup>2</sup>
<b>Verandah Area:</b>	129.40m <sup>2</sup>
<b>Carport Area:</b>	0.0m <sup>2</sup>
<b>Frontage:</b>	21.6m
<b>Total Area Under Roof:</b>	289.65m <sup>2</sup>



## One163

3  2  2 

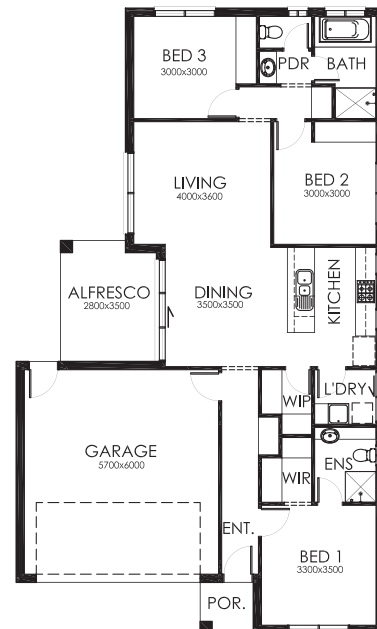


### Features

- 3 Bedrooms
- Large Living & Dining Area
- Double Lock-Up Garage
- Outdoor Alfresco
- Ensuite & WIR

### Area Specifications

<b>Living Area:</b>	113.65m <sup>2</sup>
<b>Porch:</b>	2.34m <sup>2</sup>
<b>Garage:</b>	38.05m <sup>2</sup>
<b>Alfresco:</b>	9.69m <sup>2</sup>
<b>Total Area:</b>	163.73m <sup>2</sup>
<b>Width:</b>	10.80m
<b>Depth:</b>	18.35m



# Three Bedroom

## One164

3 2 2

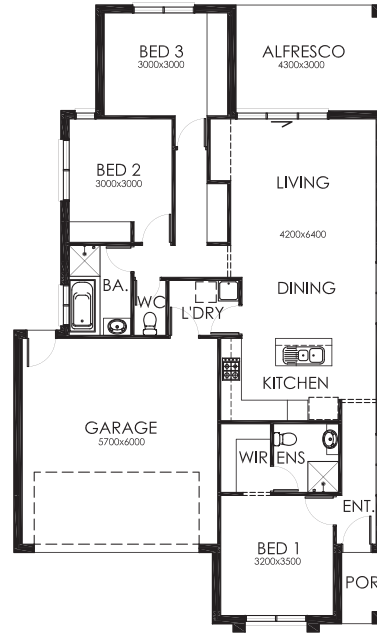


### Features

- 3 Bedrooms
- Large Living & Dining Area
- Double Lock-up Garage
- Outdoor Alfresco
- Ensuite & WIR

### Area Specifications

<b>Living Area:</b>	111.50m <sup>2</sup>
<b>Porch:</b>	2.60m <sup>2</sup>
<b>Garage:</b>	37.35m <sup>2</sup>
<b>Alfresco:</b>	13.35m <sup>2</sup>
<b>Total Area:</b>	164.80m <sup>2</sup>
<b>Width:</b>	10.80m
<b>Depth:</b>	18.28m



## One165

3 2 2

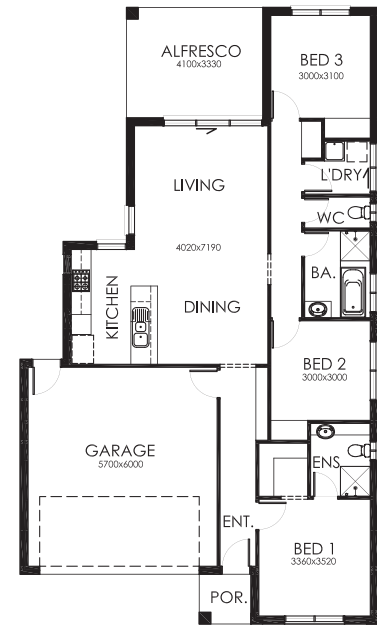


### Features

- 3 Bedrooms
- Large Living & Dining Area
- Double Lock-Up Garage
- Outdoor Alfresco
- Ensuite & WIR

### Area Specifications

<b>Living Area:</b>	112.00m <sup>2</sup>
<b>Porch:</b>	2.34m <sup>2</sup>
<b>Garage:</b>	37.37m <sup>2</sup>
<b>Alfresco:</b>	13.69m <sup>2</sup>
<b>Total Area:</b>	165.40m <sup>2</sup>
<b>Width:</b>	10.80m
<b>Depth:</b>	18.59m



## One170

3 2 2

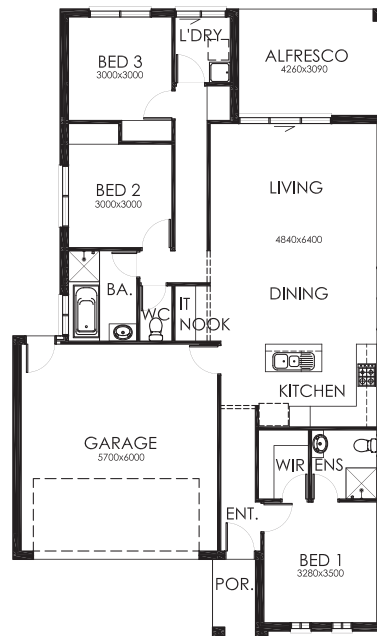


### Features

- 3 Bedrooms
- Large Living & Dining Area
- Double Lock-up Garage
- Outdoor Alfresco
- IT Nook
- Ensuite & WIR

### Area Specifications

<b>Living Area:</b>	116.72m <sup>2</sup>
<b>Porch:</b>	2.60m <sup>2</sup>
<b>Garage:</b>	37.39m <sup>2</sup>
<b>Alfresco:</b>	13.16m <sup>2</sup>
<b>Total Area:</b>	170.17m <sup>2</sup>
<b>Width:</b>	10.80m
<b>Depth:</b>	18.28m



# Three Bedroom

## One185

3  2  2 



### Features

- 3 Bedrooms
- Large Kitchen/Living/Dining
- Double Lock-up Garage
- Separate Lounge & Study
- Outdoor Alfresco

### Area Specifications

<b>Living Area:</b>	135.94m <sup>2</sup>
<b>Porch:</b>	2.04m <sup>2</sup>
<b>Garage:</b>	37.49m <sup>2</sup>
<b>Alfresco:</b>	9.77m <sup>2</sup>
<b>Total Area:</b>	185.24m <sup>2</sup>
<b>Width:</b>	13.80m
<b>Depth:</b>	16.52m



## One186

3  2  2 

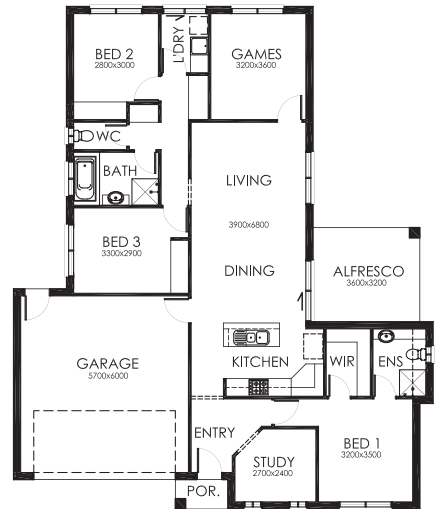


### Features

- 3 Bedrooms
- Large Living & Dining Area
- Double Lock-up Garage
- Games Room
- Separate Study
- Outdoor Alfresco

### Area Specifications

<b>Living Area:</b>	135.89m <sup>2</sup>
<b>Porch:</b>	1.78m <sup>2</sup>
<b>Garage:</b>	37.49m <sup>2</sup>
<b>Alfresco:</b>	11.61m <sup>2</sup>
<b>Total Area:</b>	186.77m <sup>2</sup>
<b>Width:</b>	14.25m
<b>Depth:</b>	17.07m



## The Range Home 5

3  2  1 

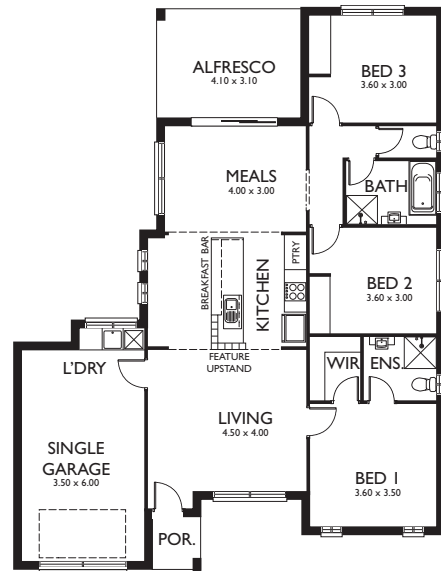


### Features

- 3 Bedrooms
- Large Living
- Alfresco
- Walk in Robe & Ensuite

### Area Specifications

<b>Living Area:</b>	109.5m <sup>2</sup>
<b>Garage:</b>	26.5m <sup>2</sup>
<b>Total Area:</b>	136.00m <sup>2</sup>



# Three Bedroom

## One197

3 2 2



### Features

- 3 Bedrooms
- Large Living & Dining Area
- Double Lock-up Garage
- Outdoor Alfresco
- Games Room & Study

### Area Specifications

<b>Living Area:</b>	146.62m <sup>2</sup>
<b>Porch:</b>	1.09m <sup>2</sup>
<b>Garage:</b>	37.78m <sup>2</sup>
<b>Alfresco:</b>	11.03m <sup>2</sup>
<b>Total Area:</b>	197.33m <sup>2</sup>
<b>Width:</b>	13.80m
<b>Depth:</b>	16.75m



## One204

3 2 2

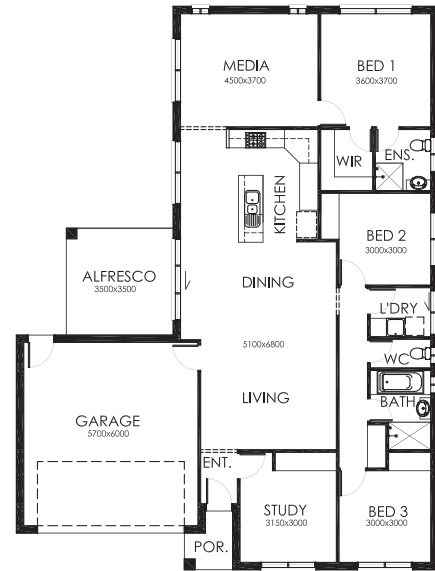


### Features

- 3 Bedrooms
- Large Kitchen/Living/Dining
- Double Lock-Up Garage
- Separate Study and Media Room
- Outdoor Alfresco

### Area Specifications

<b>Living Area:</b>	151.65m <sup>2</sup>
<b>Porch:</b>	2.54m <sup>2</sup>
<b>Garage:</b>	38.46m <sup>2</sup>
<b>Alfresco:</b>	12.25m <sup>2</sup>
<b>Total Area:</b>	204.90m <sup>2</sup>
<b>Width:</b>	13.80m
<b>Depth:</b>	18.44m



## Orford

3 1 1

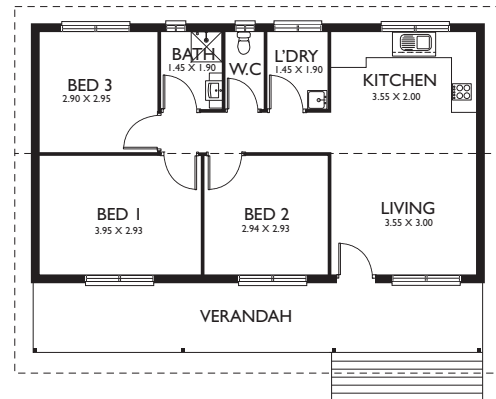


### Features

- 3 Bedrooms
- Separate laundry
- Open Plan
- Large Verandah

### Area Specifications

<b>Living Area:</b>	66.4m <sup>2</sup>
<b>Verandah Area:</b>	19.4m <sup>2</sup>
<b>Carpport Area:</b>	0.0m <sup>2</sup>
<b>Frontage:</b>	10.8m
<b>Total Floor Area:</b>	85.8m <sup>2</sup>



# Three Bedroom

## Perth

3  2  1 

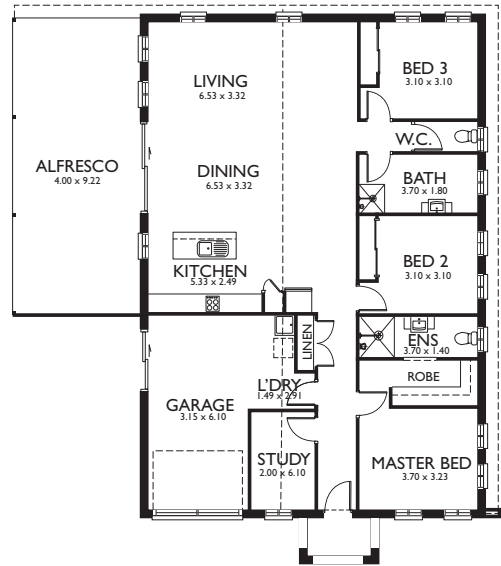


### Features

- 3 Bedrooms
- Study
- Open Plan
- Ensuite & Walk in Robe

### Area Specifications

<b>Living Area:</b>	138.9m <sup>2</sup>
<b>Porch Area:</b>	3.2m <sup>2</sup>
<b>Alfresco Area:</b>	36.9m <sup>2</sup>
<b>Carpport Area:</b>	19.2m <sup>2</sup>
<b>Frontage:</b>	10.50m
<b>Total Area:</b>	198.2m <sup>2</sup>



## Railton

3  1 

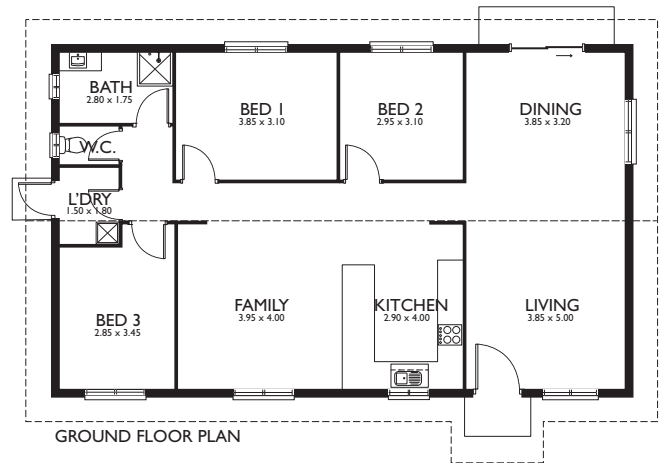


### Features

- 3 Bedrooms
- Separate Laundry
- Open Plan

### Area Specifications

<b>Living Area:</b>	116.3m <sup>2</sup>
<b>Patio Area:</b>	0.0m <sup>2</sup>
<b>Carpport Area:</b>	0.0m <sup>2</sup>
<b>Frontage:</b>	13.9m
<b>Total Floor Area:</b>	116.3m <sup>2</sup>



## The Range Home 1

3  2  2 

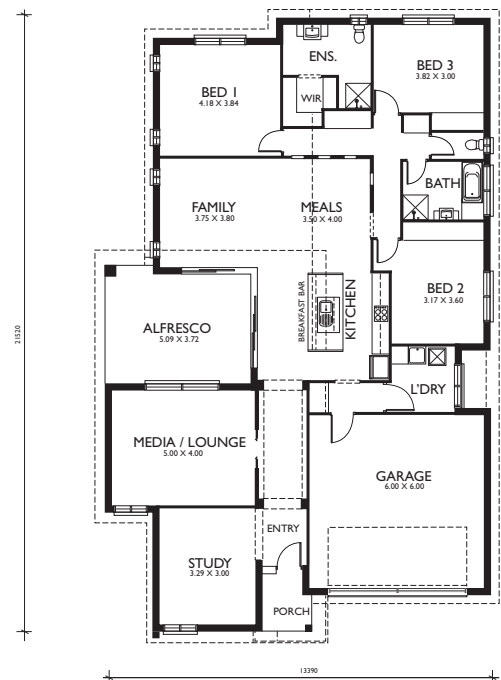


### Features

- 3 Bedrooms
- Media/Lounge/Study
- Alfresco
- Ensuite & Walk in Robe

### Area Specifications

<b>Living Area:</b>	187.9m <sup>2</sup>
<b>Garage:</b>	39.5m <sup>2</sup>
<b>Porch:</b>	2.6m <sup>2</sup>
<b>Alfresco:</b>	19.5m <sup>2</sup>
<b>Total Area:</b>	249.2m <sup>2</sup>



# Three Bedroom

## The Range Home 2

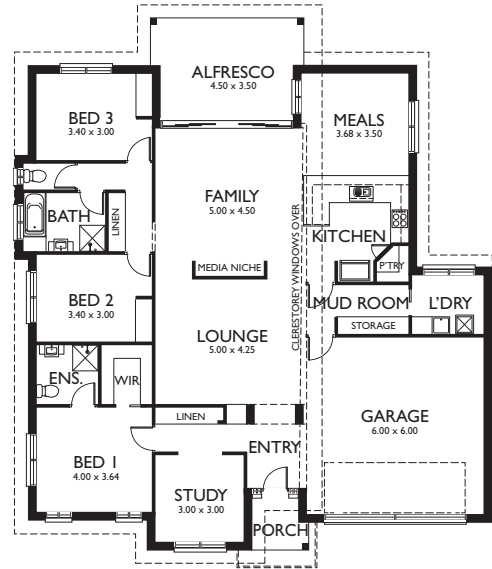


### Features

- 3 Bedrooms
- Open Living
- Ensuite & Walk in Robe
- Alfresco

### Area Specifications

<b>Living Area:</b>	181.6m <sup>2</sup>
<b>Garage:</b>	39.3m <sup>2</sup>
<b>Porch:</b>	3.2m <sup>2</sup>
<b>Alfresco:</b>	16.9m <sup>2</sup>
<b>Total Area:</b>	241.0m <sup>2</sup>



## The Range Home 3

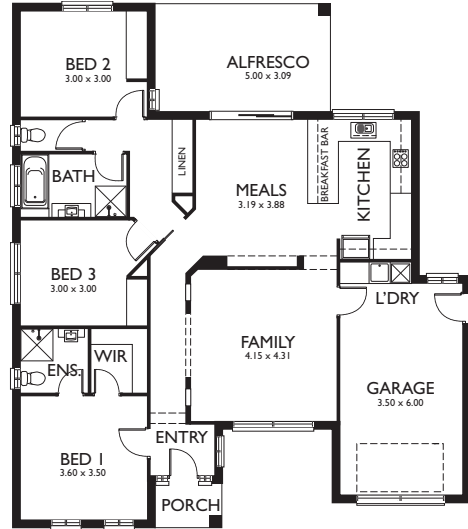


### Features

- 3 Bedrooms
- Open Living
- Ensuite & Walk in Robe
- Alfresco

### Area Specifications

<b>Living Area:</b>	122.0m <sup>2</sup>
<b>Garage:</b>	25.7m <sup>2</sup>
<b>Total Area:</b>	147.7m <sup>2</sup>



## The Range Home 4

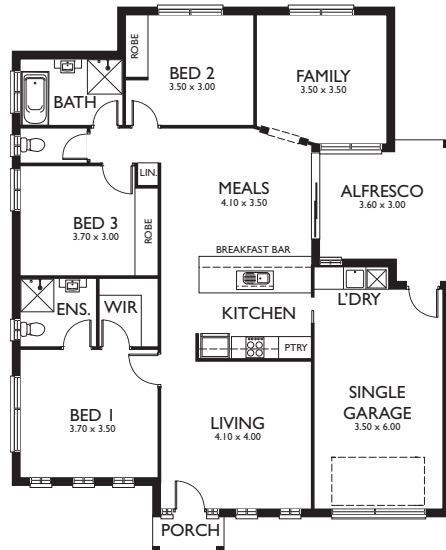


### Features

- 3 Bedrooms
- Open Living
- Ensuite & Walk in Robe
- Alfresco

### Area Specifications

<b>Living Area:</b>	118.6m <sup>2</sup>
<b>Garage:</b>	25.7m <sup>2</sup>
<b>Total Area:</b>	144.3m <sup>2</sup>



# Three Bedroom

## Richmond

3  2  2 

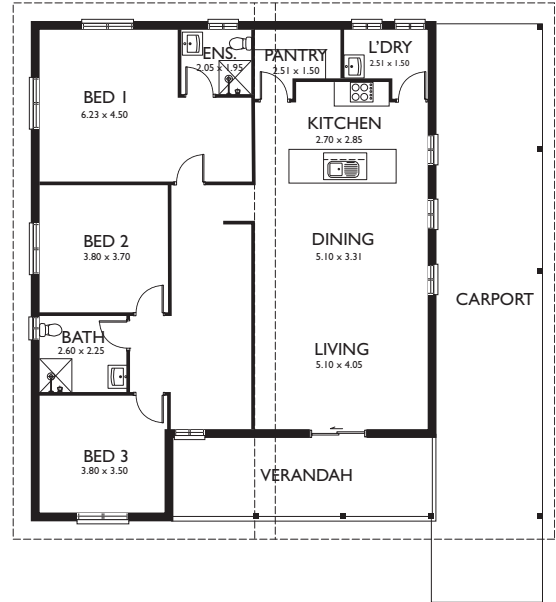


### Features

- 3 Bedrooms
- Open Living
- Separate Laundry
- Walk in Pantry

### Area Specifications

**Living Area:** 132.2m<sup>2</sup>  
**Verandah Area:** 17.7m<sup>2</sup>  
**Carport Area:** 41.0m<sup>2</sup>  
**Frontage:** 14.758m  
**Total Floor Area:** 190.9m<sup>2</sup>



## Scottsdale

3  2 

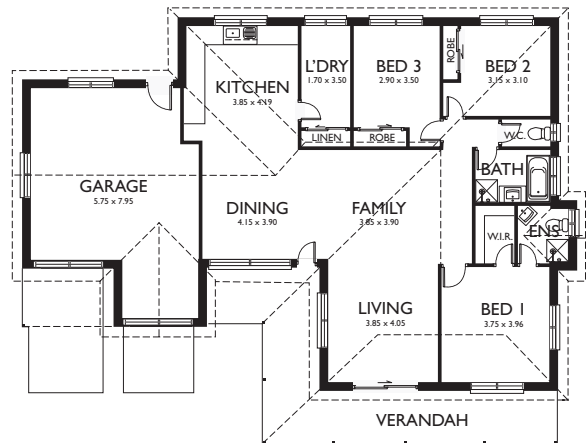


### Features

- 3 Bedroom
- Open Plan
- Ensuite and Walk in Robe
- Separate Laundry

### Area Specifications

**Living Area:** 142.1m<sup>2</sup>  
**Verandah Area:** 28.8m<sup>2</sup>  
**Carport Area:** 44.1m<sup>2</sup>  
**Frontage:** 18.73m  
**Total Floor Area:** 215.0m<sup>2</sup>  
 23.14 Squires



## Settler

3  1 

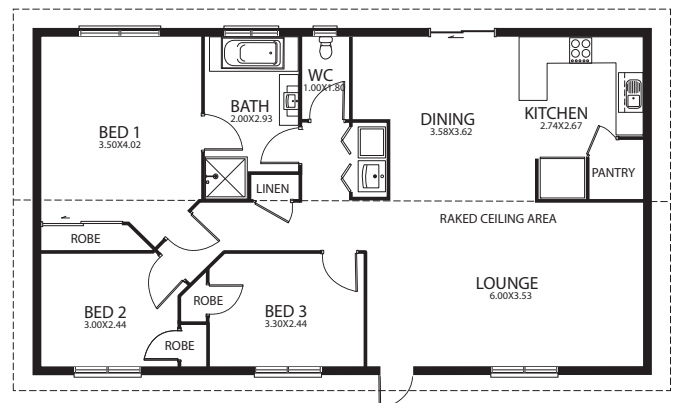


### Features

- 3 Bedrooms
- Open Plan

### Area Specifications

**Living Area:** 97.10m<sup>2</sup>  
**Carport Area:** 0.0m<sup>2</sup>  
**Total Floor Area:** 97.10m<sup>2</sup>



# Three Bedroom

## Summerhill (Duplex) 3 2 1

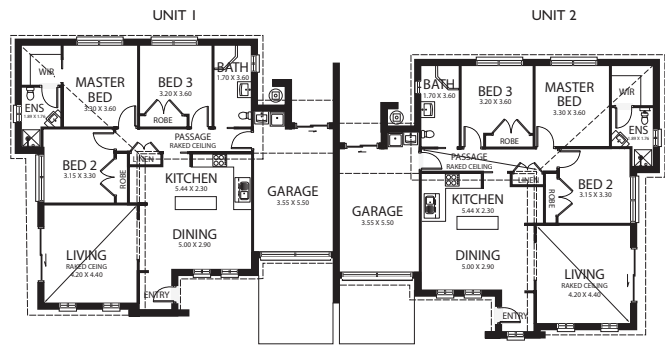


### Features

- 3 Bedroom
- Open Plan
- Ensuite & Walk in Robe

### Area Specifications (Per unit)

<b>Living Area:</b>	106.25m <sup>2</sup>
<b>Patio Area:</b>	0.0m <sup>2</sup>
<b>Portico Area:</b>	0.0m <sup>2</sup>
<b>Carpport Area:</b>	20.54m <sup>2</sup>
<b>Frontage:</b>	14.15m
<b>Total Floor Area:</b>	126.79m <sup>2</sup>



## Tasman

3  1  2 

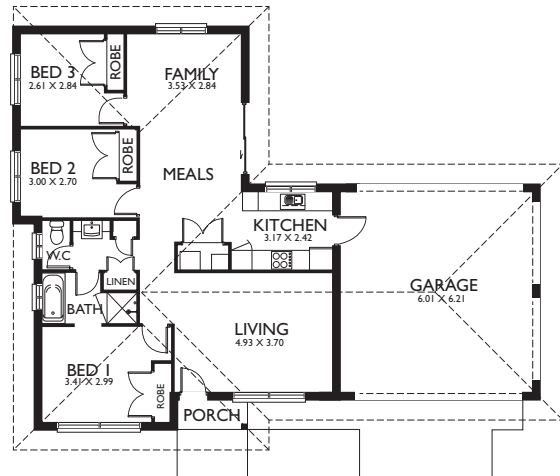


### Features

- 3 Bedroom
- Open Plan

### Area Specifications

<b>Living Area:</b>	101.50m <sup>2</sup>
<b>Porch Area:</b>	2.20m <sup>2</sup>
<b>Carpport Area:</b>	40.86m <sup>2</sup>
<b>Frontage:</b>	16.26m
<b>Total Floor Area:</b>	144.56m <sup>2</sup> 15.55 Squares



## Two299

3  2  2 

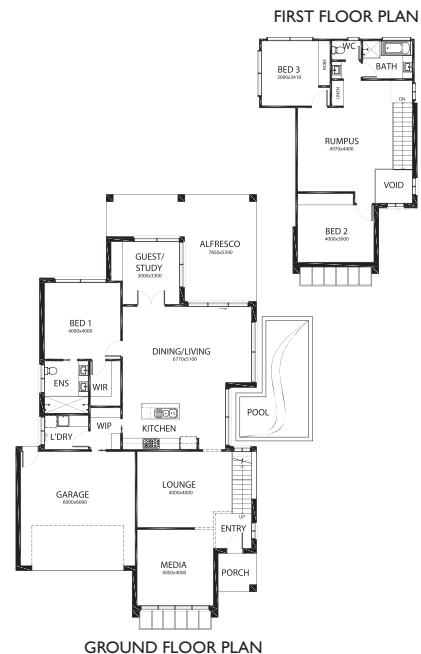


### Features

- 3 Bedrooms
- Large Living & Dining Area
- Double Lock-up Garage
- Ensuite & WIR
- Outdoor Alfresco & Swimming Pool
- Large Media Room
- Seperate Lounge

### Area Specifications

<b>GF Living Area:</b>	148.94m <sup>2</sup>
<b>UF Living Area:</b>	76.24m <sup>2</sup>
<b>Porch:</b>	4.04m <sup>2</sup>
<b>Garage:</b>	40.29m <sup>2</sup>
<b>Alfresco:</b>	30.05m <sup>2</sup>
<b>Total Area:</b>	299.56m <sup>2</sup>
<b>Width:</b>	12.58m
<b>Depth:</b>	22.10m





## One175

Skillion



3 2 2

### Features

- Large Kitchen/Living/Dining Area
- Double Lock-up Garage
- Master Bedroom with Ensuite
- Large Lounge & Outdoor Alfresco

### Area Specifications

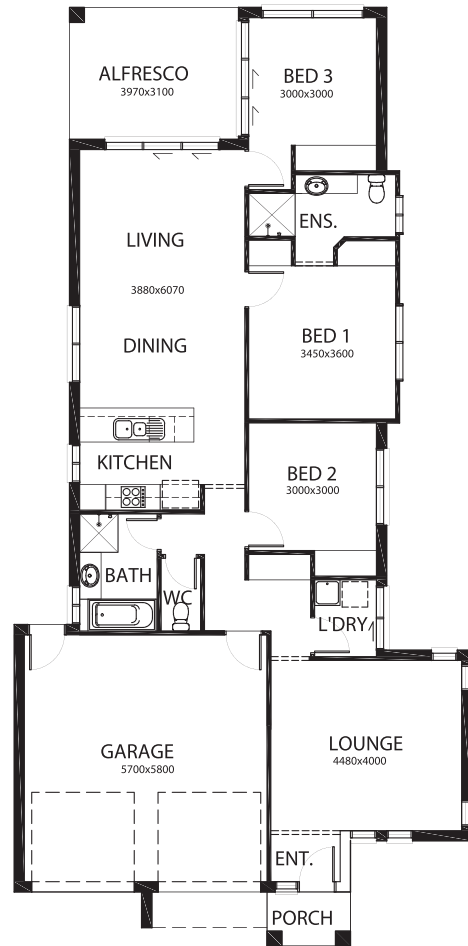
- Living Area: 124.9m<sup>2</sup>
- Porch: 2.49m<sup>2</sup>
- Garage: 36.40m<sup>2</sup>
- Alfresco: 12.30m<sup>2</sup>
- Total: 175.38m<sup>2</sup>
- Width: 10.75m
- Depth: 22.05m



Traditional



Modern



## One146

3 2 1

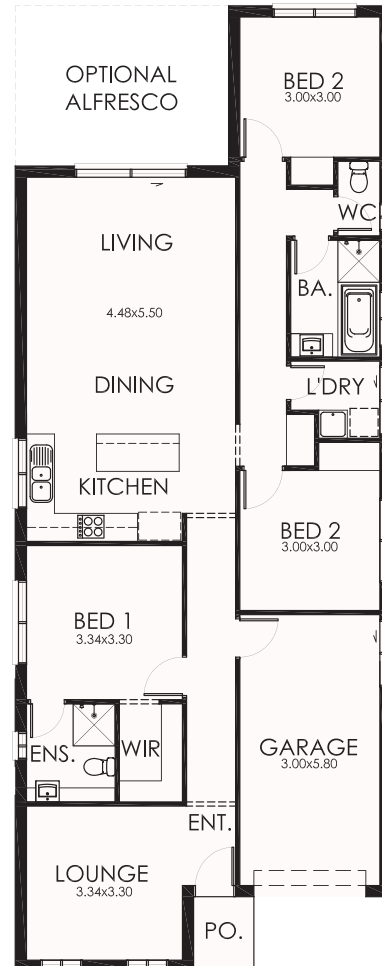


### Features

- 3 Bedrooms
- Large Living & Dining Areas
- Single Lock-Up Garage
- Separate Lounge
- Ensuite & WIR

### Area Specifications

<b>Living Area:</b>	124.46 m <sup>2</sup>
<b>Porch:</b>	2.06 m <sup>2</sup>
<b>Garage:</b>	19.56 m <sup>2</sup>
<b>Total Area:</b>	146.08 m <sup>2</sup>
<b>Width:</b>	8.05m
<b>Depth:</b>	20.68m



## One184

Skillion



4 2 2

### Features

- 4 Bedrooms
- Large Kitchen/Living/Dining Area
- Double Lock-Up Garage
- Ensuite & WIR
- Great Lounge
- Large Outdoor Alfresco

### Area Specifications

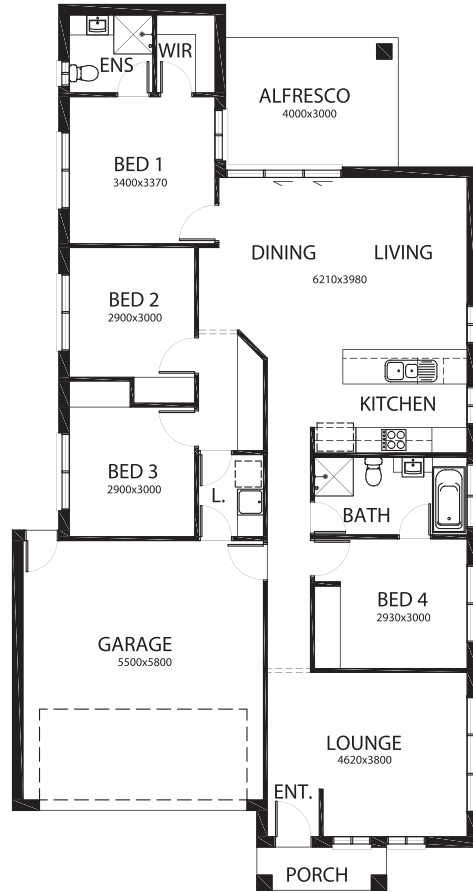
- Living Area: 133.28m<sup>2</sup>
- Porch: 3.00m<sup>2</sup>
- Garage: 36.50m<sup>2</sup>
- Alfresco: 12.00m<sup>2</sup>
- Total: 184.78m<sup>2</sup>
- Width: 10.75m
- Depth: 20.49m



Modern



Traditional



## One190

Skillion



4 2 2

### Features

- 4 Bedrooms
- Large Kitchen/Living/Dining Area
- Double Lock-up Garage
- Large Lounge with Study Area
- Ensuite & WIR
- Great Outdoor Alfresco

### Area Specifications

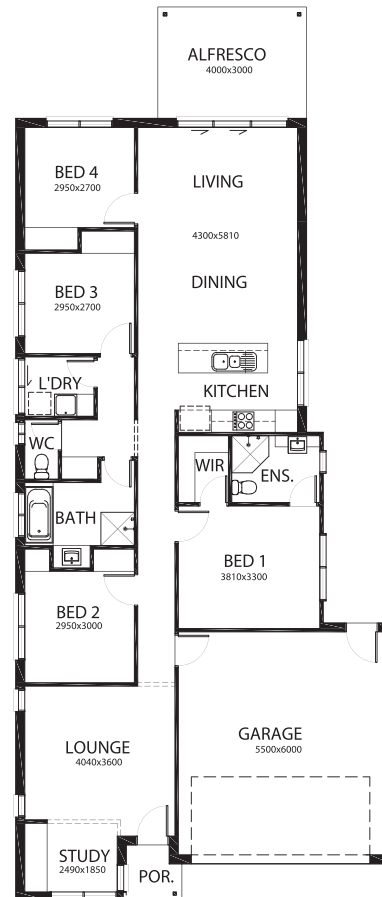
- Living Area: 140.02m<sup>2</sup>
- Porch: 2.08m<sup>2</sup>
- Garage: 36.36m<sup>2</sup>
- Alfresco: 12.00m<sup>2</sup>
- Total: 190.46m<sup>2</sup>
- Width: 10.11m
- Depth: 24.06m



Traditional



Modern



# Four Bedroom

## Beaumaris

4  1 

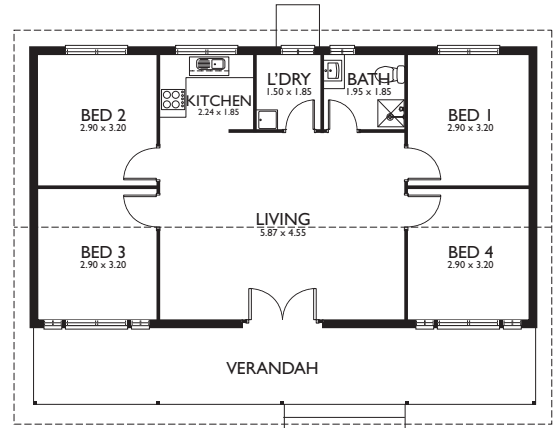


### Features

- 4 Bedrooms
- Open Plan
- Large Verandah

### Area Specifications

**Living Area:** 75.9 m<sup>2</sup>  
**Verandah Area:** 21.7m<sup>2</sup>  
**Carport Area:** 0.0m<sup>2</sup>  
**Frontage:** 12.03m  
**Total Floor Area:** 97.6m<sup>2</sup>



## Bridport

4  2  2 

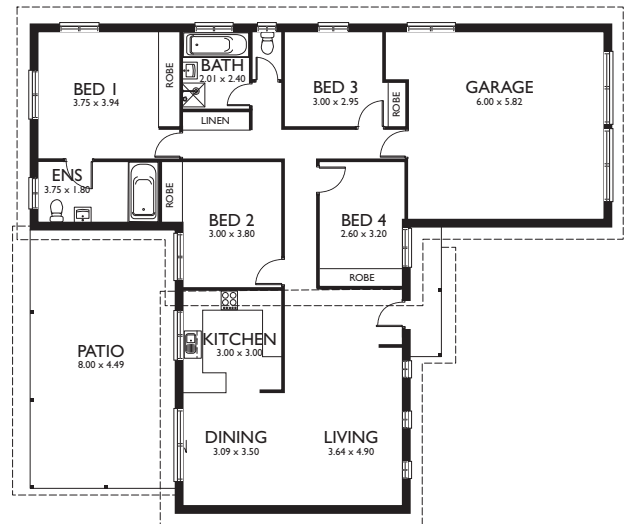


### Features

- 4 Bedroom
- Open Plan
- Large Patio
- Ensuite

### Area Specifications

**Living Area:** 52.2m<sup>2</sup>  
**Verandah Area:** 41.2m<sup>2</sup>  
**Carport Area:** 36.1m<sup>2</sup>  
**Frontage:** 14.69m  
**Total Floor Area:** 129.5m<sup>2</sup>



## Deloraine

4  2  2 

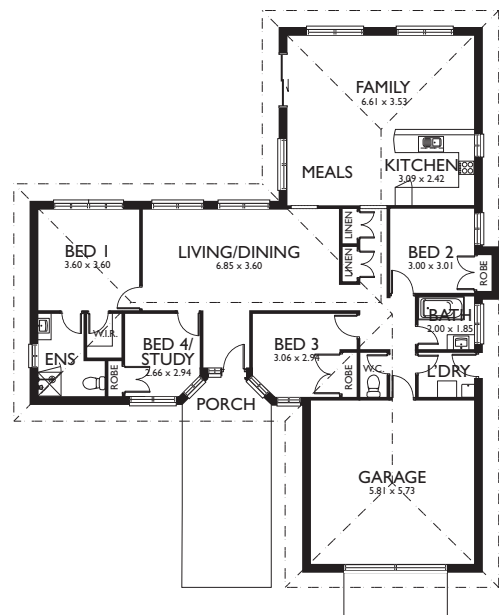


### Features

- 4 Bedroom
- Ensuite & Walk in Robe
- Separate Laundry
- Open Plan

### Area Specifications

**Living Area:** 149.33 m<sup>2</sup>  
**Porch Area:** 1.94m<sup>2</sup>  
**Garage Area:** 36.62m<sup>2</sup>  
**Frontage:** 15.67m  
**Total Floor Area:** 187.89m<sup>2</sup>  
 20.21 Squares



# Four Bedroom

## Devonport

4  2 

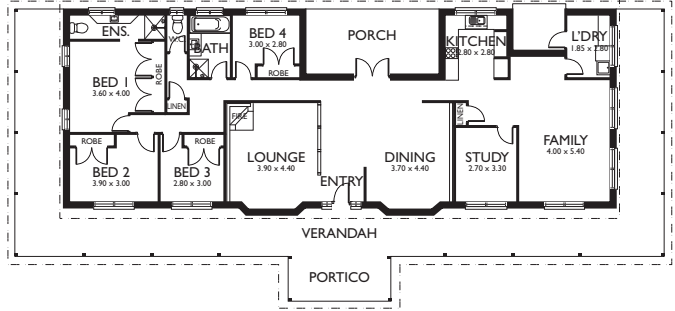


### Features

- 4 Bedrooms
- Verandah
- Back Porch
- Study

### Area Specifications

<b>Living Area:</b>	191.04m <sup>2</sup>
<b>Verandha Area:</b>	101.57m <sup>2</sup>
<b>Portico Area:</b>	8.93m <sup>2</sup>
<b>Porch Area:</b>	21.93m <sup>2</sup>
<b>Carpport Area:</b>	0.0m <sup>2</sup>
<b>Frontage:</b>	28.67m
<b>Total Floor Area:</b>	323.47m <sup>2</sup>



## Dunalley

4  2  2 

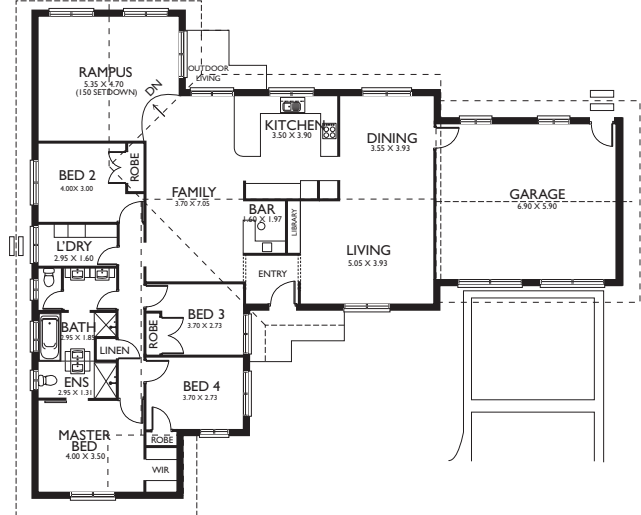


### Features

- 4 Bedrooms
- Ensuite & Walk in Robe
- Separate Laundry
- Rumpus Room

### Area Specifications

<b>Living Area:</b>	189.5m <sup>2</sup>
<b>Verandha Area:</b>	0.0m <sup>2</sup>
<b>Carpport Area:</b>	40.7m <sup>2</sup>
<b>Frontage:</b>	22.5m
<b>Total Floor Area:</b>	229.2m <sup>2</sup>



## Entally

4  2  2 

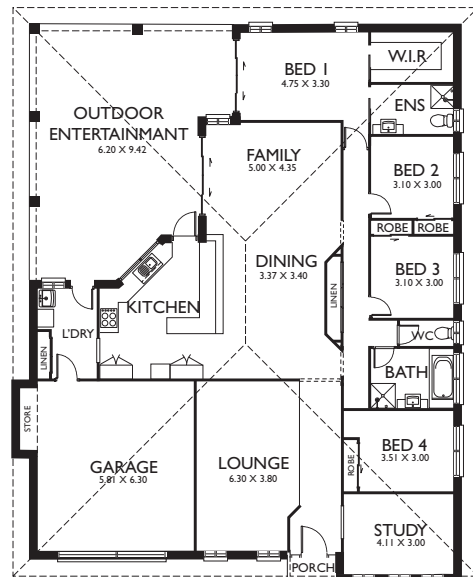


### Features

- 4 Bedrooms
- Open Plan
- Large Outdoor Entertainment
- Ensuite & Walk in Robe

### Area Specifications

<b>Living Area:</b>	213.17m <sup>2</sup>
<b>Patio Area:</b>	58.84m <sup>2</sup>
<b>Porch Area:</b>	1.52m <sup>2</sup>
<b>Carpport Area:</b>	40.61m <sup>2</sup>
<b>Frontage:</b>	13.67m
<b>Total Floor Area:</b>	314.14m <sup>2</sup>
	33.80 Squares



## Evandale

4  2  2 

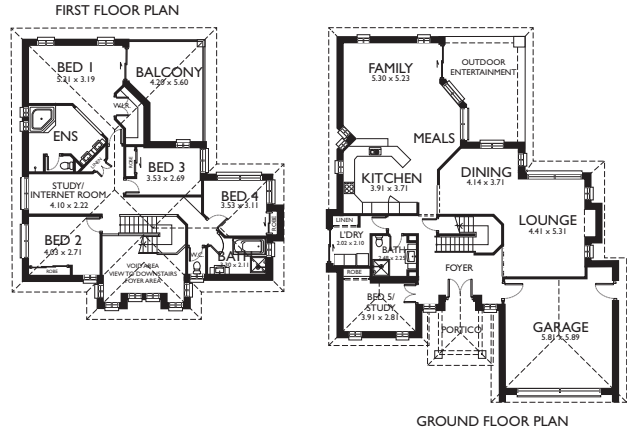


### Features

- 4 Bedrooms
- Open Plan
- Outdoor Entertaining
- Balcony

### Area Specifications

**Living Area (G.FL):** 150.73m<sup>2</sup>  
**Living Area (F.FL):** 116.24m<sup>2</sup>  
**Patio Area (G.FL):** 20.28m<sup>2</sup>  
**Patio Area (F.FL):** 20.28m<sup>2</sup>  
**Portico Area:** 7.14m<sup>2</sup>  
**Carpport Area:** 39.58m<sup>2</sup>  
**Frontage:** 15.62m  
**Total Floor Area:** 354.23m<sup>2</sup>  
 38.12 Squares



## Flinders

4  2  2 

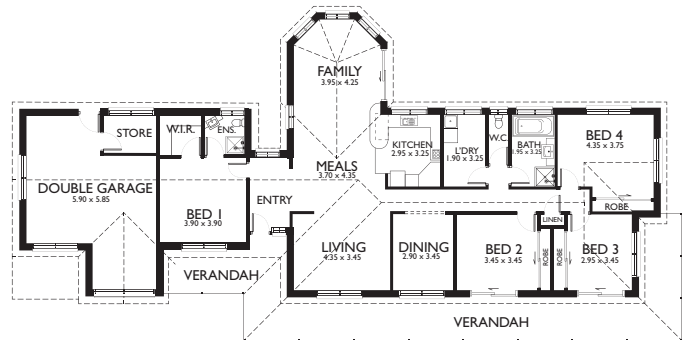


### Features

- 4 Bedrooms
- Walk in Robe and Ensuite
- Separate Laundry
- Store Room

### Area Specifications

**Living Area:** 179.9m<sup>2</sup>  
**Verandah Area:** 60.0m<sup>2</sup>  
**Carpport Area:** 35.9m<sup>2</sup>  
**Frontage:** 28.17m  
**Total Floor Area:** 275.8m<sup>2</sup>



## Franklin

4  2 

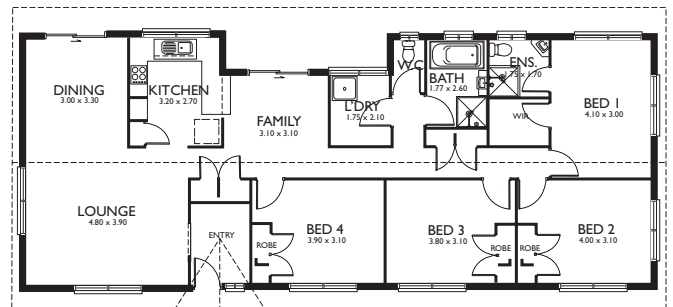


### Features

- 4 Bedrooms
- Open Plan
- Separate Laundry
- Ensuite & Walk in Robe

### Area Specifications

**Living Area:** 130.4m<sup>2</sup>  
**Verandah Area:** 18.5m<sup>2</sup>  
**Carpport Area:** 0.0m<sup>2</sup>  
**Frontage:** 19.1m  
**Total Floor Area:** 148.9m<sup>2</sup>



# Four Bedroom

## Homestead

4  2 

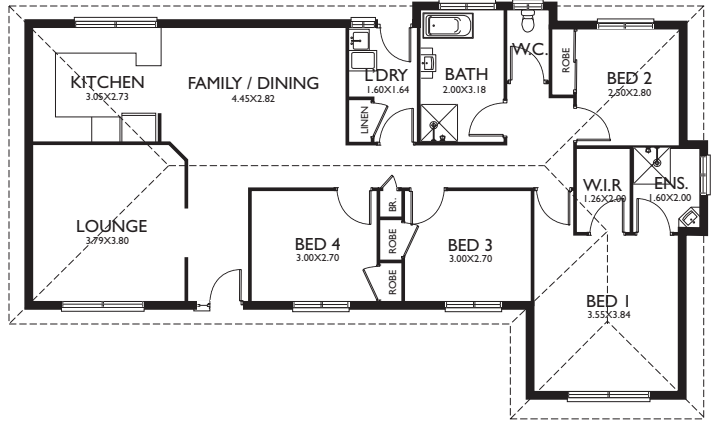


### Features

- 4 Bedrooms
- Open Plan
- Walk in Robe & Ensuite
- Separate Laundry

### Area Specifications

**Living Area:** 121.356m<sup>2</sup>  
**Verandha Area:** 0.0m<sup>2</sup>  
**Carpport Area:** 0.0m<sup>2</sup>  
**Frontage:** 16.28m  
**Total Floor Area:** 121.356m<sup>2</sup>



## Huon

4  2  2 

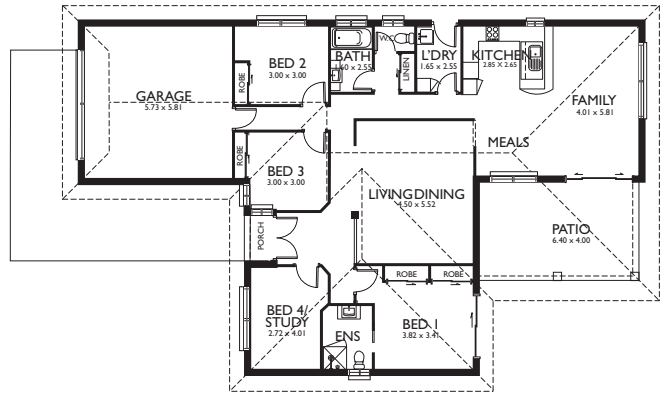


### Features

- 4 Bedrooms
- Separate Laundry
- Patio

### Area Specifications

**Living Area:** 162.95m<sup>2</sup>  
**Patio Area:** 25.60m<sup>2</sup>  
**Porch Area:** 1.81m<sup>2</sup>  
**Carpport Area:** 36.64m<sup>2</sup>  
**Frontage:** 13.67m  
**Total Floor Area:** 227.00m<sup>2</sup>  
 24.43 Squares



## Huonville

4  2  2 

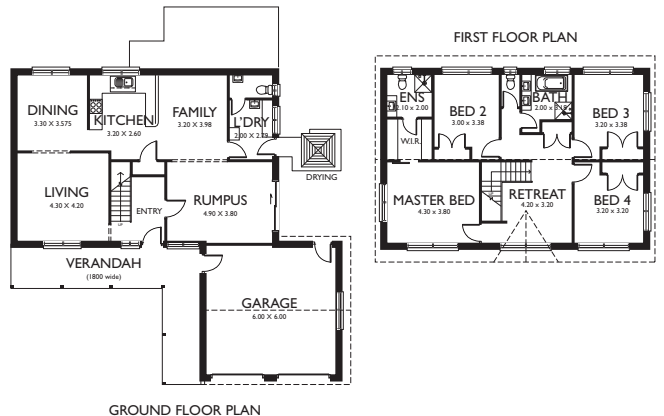


### Features

- 4 Bedrooms
- Ground Floor Entertaining
- Master bedroom with retreat
- Ensuite & Walk in Robe

### Area Specifications

**Living Area:** 171.69m<sup>2</sup>  
**Verandha Area:** 24.0m<sup>2</sup>  
**Carpport Area:** 36.0m<sup>2</sup>  
**Frontage:** 15.3m  
**Total Floor Area:** 231.69m<sup>2</sup>



# Four Bedroom

## Kempton

4 2 2

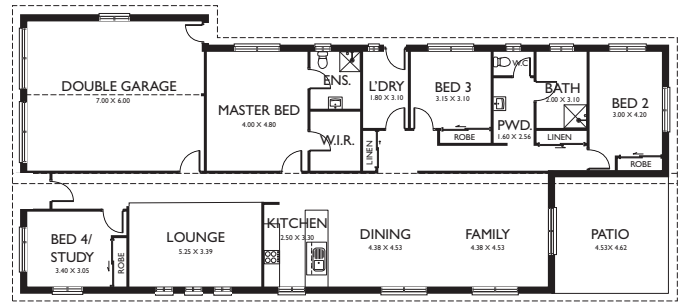


### Features

- 4 Bedrooms
- Open plan living
- Patio
- Separate Laundry

### Area Specifications

**Living Area:** 188.0m<sup>2</sup>  
**Verandha Area:** 20.9m<sup>2</sup>  
**Carpport Area:** 42.0m<sup>2</sup>  
**Frontage:** 10.8m  
**Total Floor Area:** 251.0m<sup>2</sup>



## Lilydale

4 2 2

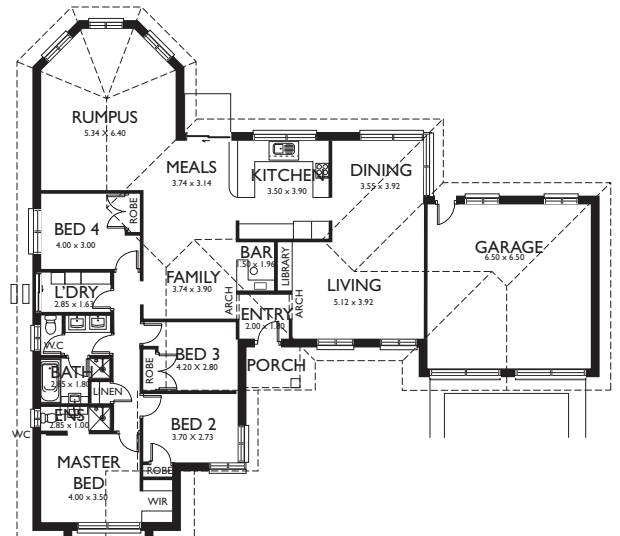


### Features

- 4 Bedrooms
- Ensuite & Walk in Robe
- Rumpus
- Separate Laundry

### Area Specifications

**Living Area:** 189.5m<sup>2</sup>  
**Porch Area:** 3.71m<sup>2</sup>  
**Carpport Area:** 42.25m<sup>2</sup>  
**Frontage:** 22.18m  
**Total Floor Area:** 235.46m<sup>2</sup>



## Meadows

4 2 2

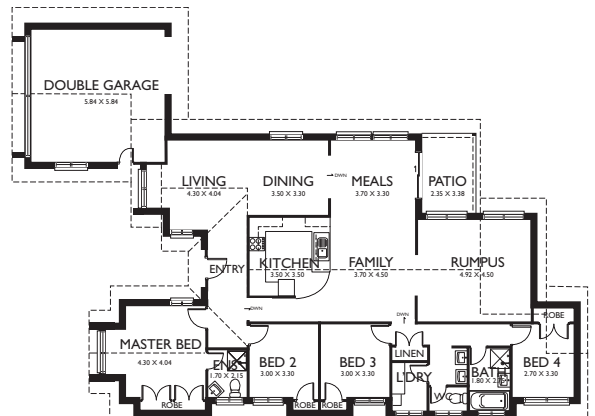


### Features

- 4 Bedrooms
- Open Plan
- Patio
- Separate Laundry

### Area Specifications

**Living Area:** 193.13m<sup>2</sup>  
**Patio Area:** 7.97m<sup>2</sup>  
**Carpport Area:** 39.74m<sup>2</sup>  
**Frontage:** 17.09m  
**Total Floor Area:** 243.84m<sup>2</sup>  
 26.24 Squares



# Four Bedroom

## Newstead

4 2 2

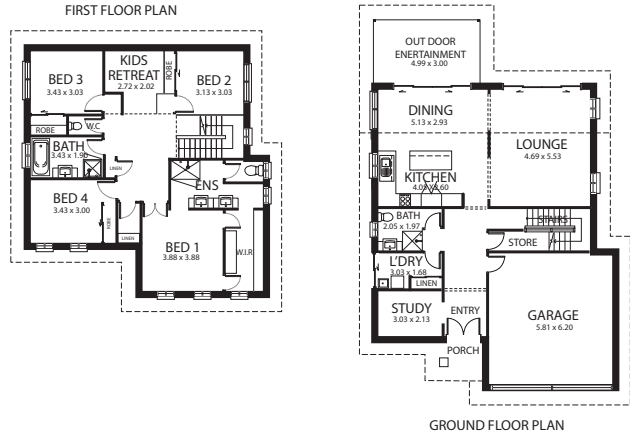


### Features

- 4 Bedrooms
- Kids Retreat
- Outdoor Entertainment
- Study/Store

### Area Specifications

**Living Area (G.FL):** 104.08m<sup>2</sup>  
**Living Area (G.FL):** 110.36m<sup>2</sup>  
**Patio Area (G.FL):** 15.00m<sup>2</sup>  
**Porch Area:** 2.52m<sup>2</sup>  
**Carpport Area:** 38.01m<sup>2</sup>  
**Frontage:** 11.37m<sup>2</sup>  
**Total Area:** 269.97m<sup>2</sup>  
 26.09Squares



## Oatland

4 2 2

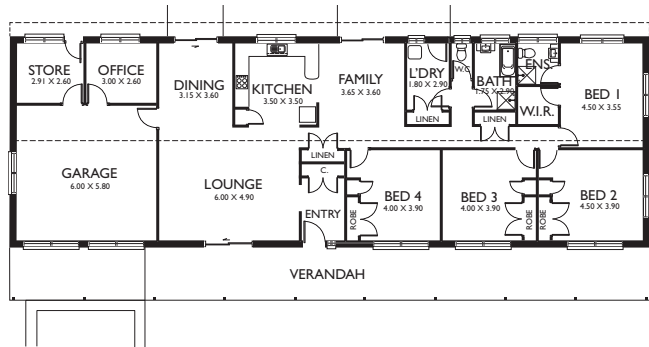


### Features

- 4 Bedrooms
- Office/Store
- Open Plan
- Ensuite & Walk in Robe

### Area Specifications

**Living Area:** 206.3m<sup>2</sup>  
**Veranda Area:** 61.4m<sup>2</sup>  
**Carpport Area:** 38.9m<sup>2</sup>  
**Frontage:** 27.27m  
**Total Area:** 306.6m<sup>2</sup>  
 33.0Squares



## One172

4 2 2

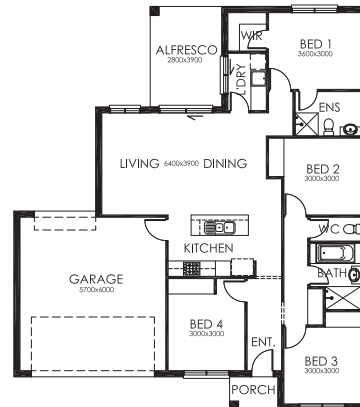


### Features

- 4 Bedrooms
- Large Living & Dining Area
- Double Lock-up Garage
- Outdoor Alfresco
- Ensuite & WIR

### Area Specifications

**Living Area:** 121.53m<sup>2</sup>  
**Porch:** 2.45m<sup>2</sup>  
**Garage:** 37.83m<sup>2</sup>  
**Alfresco:** 11.00m<sup>2</sup>  
**Total Floor Area:** 171.81m<sup>2</sup>  
**Width:** 13.80m  
**Depth:** 15.78m





# Four Bedroom

## One173

4 2 2

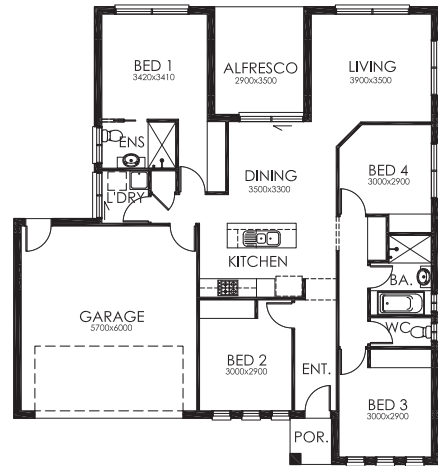


### Features

- 4 Bedrooms
- Large Living & Dining Area
- Double Lock-Up Garage
- Outdoor Alfresco
- Ensuite

### Area Specifications

**Living Area:** 123.72m<sup>2</sup>  
**Porch:** 2.02m<sup>2</sup>  
**Garage:** 37.69m<sup>2</sup>  
**Alfresco:** 10.15m<sup>2</sup>  
**Total Floor Area:** 173.58m<sup>2</sup>  
**Width:** 13.80m  
**Depth:** 14.86m



## One177

4 2 2



### Features

- 4 Bedrooms
- Large Living & Dining Area
- Double Lock-Up Garage
- Outdoor Alfresco
- Ensuite & WIR

### Area Specifications

**Living Area:** 125.70m<sup>2</sup>  
**Porch:** 4.56m<sup>2</sup>  
**Garage:** 37.44m<sup>2</sup>  
**Alfresco:** 9.46m<sup>2</sup>  
**Total Floor Area:** 177.16m<sup>2</sup>  
**Width:** 12.30mm  
**Depth:** 19.66m



## One179

4 2 2

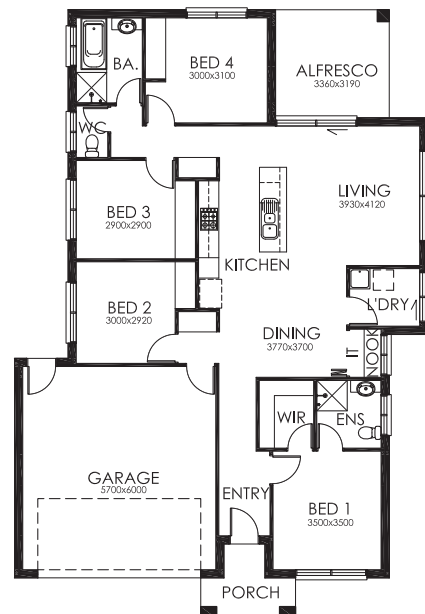


### Features

- 4 Bedrooms
- Large Living & Dining Area
- Double Lock-Up Garage
- Outdoor Alfresco
- Ensuite & WIR

### Area Specifications

**Living Area:** 126.89m<sup>2</sup>  
**Porch:** 4.57m<sup>2</sup>  
**Garage:** 37.68m<sup>2</sup>  
**Alfresco:** 10.71m<sup>2</sup>  
**Total Floor Area:** 179.85m<sup>2</sup>  
**Width:** 12.20mm  
**Depth:** 17.97m



# Four Bedroom

## One197

4 2 2

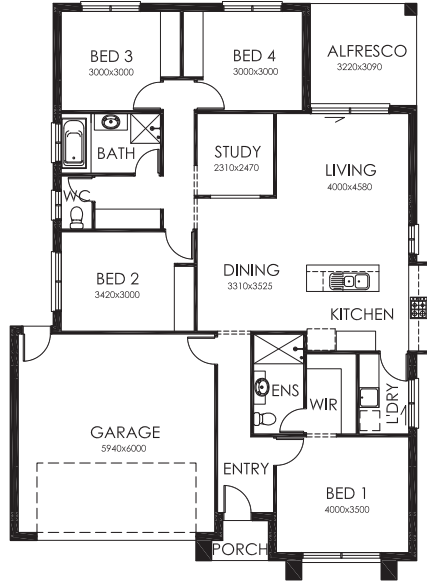


### Features

- 4 Bedrooms
- Large Living/Kitchen/Dining Area
- Double Lock-Up Garage
- Separate Study
- Outdoor Alfresco
- Ensuite & WIR

### Area Specifications

<b>Living Area:</b>	142.19m <sup>2</sup>
<b>Porch:</b>	1.88m <sup>2</sup>
<b>Garage:</b>	38.73m <sup>2</sup>
<b>Alfresco:</b>	9.95m <sup>2</sup>
<b>Total Area:</b>	192.75m <sup>2</sup>
<b>Width:</b>	12.74m
<b>Depth:</b>	17.43m



## One193

4 2 2



### Features

- 4 Bedrooms
- Large Living and Dining Area
- Double Lock-Up Garage
- Outdoor Alfresco
- Ensuite & WIR

### Area Specifications

<b>Living Area:</b>	139.61m <sup>2</sup>
<b>Porch:</b>	4.99m <sup>2</sup>
<b>Garage:</b>	38.87m <sup>2</sup>
<b>Alfresco:</b>	9.94m <sup>2</sup>
<b>Total Area:</b>	193.41m <sup>2</sup>
<b>Width:</b>	12.30m
<b>Depth:</b>	17.74m



## One194

4 2 2

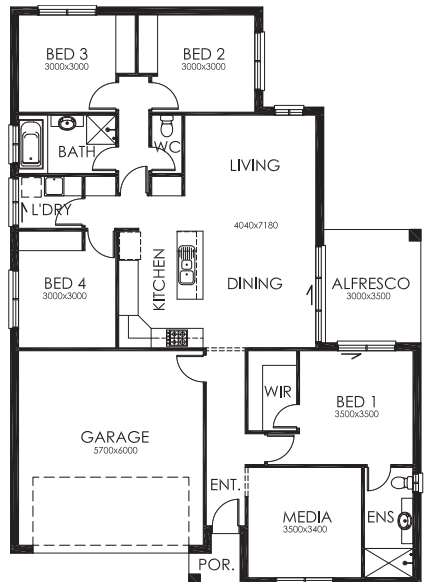


### Features

- 4 Bedrooms
- Living and Dining Areas
- Double Lock-Up Garage
- Outdoor Alfresco
- Media Room

### Area Specifications

<b>Living Area:</b>	144.71m <sup>2</sup>
<b>Porch:</b>	2.12m <sup>2</sup>
<b>Garage:</b>	37.08m <sup>2</sup>
<b>Alfresco:</b>	10.50m <sup>2</sup>
<b>Total Area:</b>	194.41m <sup>2</sup>
<b>Width:</b>	12.65m
<b>Depth:</b>	17.84m



# Four Bedroom

## One195

4  2  2 

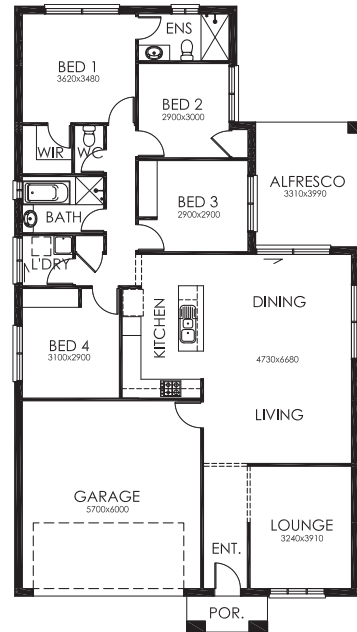


### Features

- 4 Bedrooms
- Living/Kitchen/Dining Area
- Double Lock-Up Garage
- Outdoor Alfresco
- Separate Lounge Room

### Area Specifications

<b>Living Area:</b>	142.60m <sup>2</sup>
<b>Porch:</b>	2.96m <sup>2</sup>
<b>Garage:</b>	37.06m <sup>2</sup>
<b>Alfresco:</b>	13.20m <sup>2</sup>
<b>Total Area:</b>	195.82m <sup>2</sup>
<b>Width:</b>	11.00m
<b>Depth:</b>	20.00m



## One195

4  2  2 

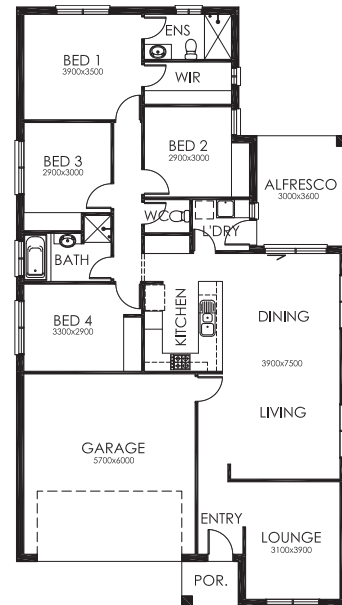


### Features

- 4 Bedrooms
- Large Living/Kitchen/Dining Area
- Double Lock-Up Garage
- Separate Lounge
- Outdoor Alfresco

### Area Specifications

<b>Living Area:</b>	144.78m <sup>2</sup>
<b>Porch:</b>	2.82m <sup>2</sup>
<b>Garage:</b>	37.06m <sup>2</sup>
<b>Alfresco:</b>	11.07m <sup>2</sup>
<b>Total Area:</b>	195.73m <sup>2</sup>
<b>Width:</b>	11.00m
<b>Depth:</b>	19.95m



## One199

4  2  2 

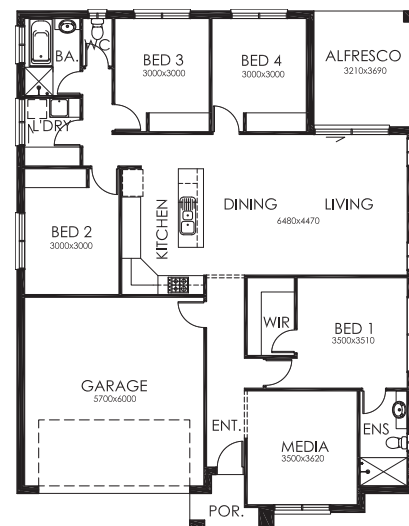


### Features

- 4 Bedrooms
- Large Living/Kitchen/Dining Area
- Double Lock-Up Garage
- Outdoor Alfresco
- Media Room

### Area Specifications

<b>Living Area:</b>	146.65m <sup>2</sup>
<b>Porch:</b>	3.41m <sup>2</sup>
<b>Garage:</b>	37.21m <sup>2</sup>
<b>Alfresco:</b>	11.84m <sup>2</sup>
<b>Total Area:</b>	199.11m <sup>2</sup>
<b>Width:</b>	12.65m
<b>Depth:</b>	16.55m



# Four Bedroom

## One201

4 2 2

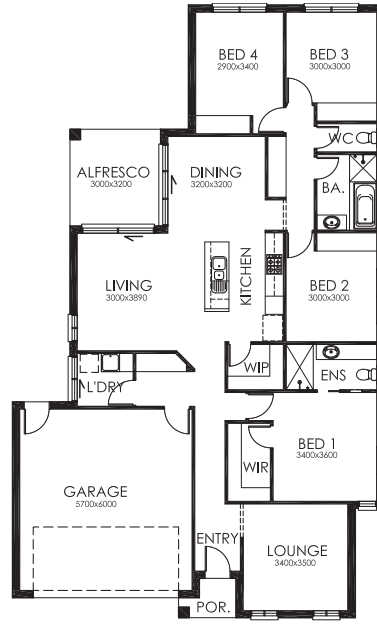


### Features

- 4 Bedrooms
- Large Living/Kitchen/Dining Area
- Double Lock-Up Garage
- Outdoor Alfresco
- Separate Lounge

### Area Specifications

<b>Living Area:</b>	152.06m <sup>2</sup>
<b>Porch:</b>	1.97m <sup>2</sup>
<b>Garage:</b>	37.52m <sup>2</sup>
<b>Alfresco:</b>	9.60m <sup>2</sup>
<b>Total Area:</b>	201.15m <sup>2</sup>
<b>Width:</b>	12.30m
<b>Depth:</b>	20.27m



## One205

4 2 2



### Features

- 4 Bedrooms
- Large Living and Dining Area
- Double Lock-Up Garage
- Outdoor Alfresco
- Separate Lounge

### Area Specifications

<b>Living Area:</b>	151.26m <sup>2</sup>
<b>Porch:</b>	4.01m <sup>2</sup>
<b>Garage:</b>	38.45m <sup>2</sup>
<b>Alfresco:</b>	11.67m <sup>2</sup>
<b>Total Area:</b>	205.56m <sup>2</sup>
<b>Width:</b>	12.29m
<b>Depth:</b>	22.45m



## One233

4 2 2



### Features

- 4 Bedrooms
- Living and Dining Areas
- Double Lock-Up Garage
- Swimming Pool
- Outdoor Alfresco
- Ensuite & WIR

### Area Specifications

<b>Living Area:</b>	166.80m <sup>2</sup>
<b>Porch:</b>	7.85m <sup>2</sup>
<b>Garage:</b>	40.82m <sup>2</sup>
<b>Alfresco:</b>	17.73m <sup>2</sup>
<b>Total Area:</b>	233.20m <sup>2</sup>
<b>Width:</b>	13.88m
<b>Depth:</b>	24.40m



# Four Bedroom

## One241

4 2 2

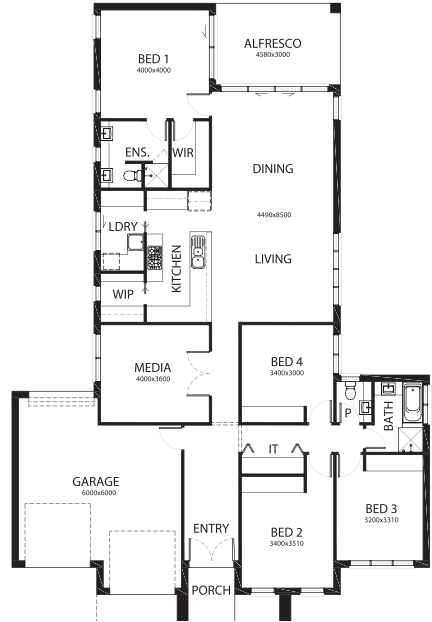


### Features

- 4 Bedrooms
- Living/Kitchen/Dining Area
- Double Lock-Up Garage
- Ensuite & WIR
- Outdoor Alfresco
- Media Room

### Area Specifications

<b>Living Area:</b>	184.64m <sup>2</sup>
<b>Porch:</b>	3.44m <sup>2</sup>
<b>Garage:</b>	40.29m <sup>2</sup>
<b>Alfresco:</b>	13.74m <sup>2</sup>
<b>Total Area:</b>	241.63m <sup>2</sup>
<b>Width:</b>	15.37m
<b>Depth:</b>	22.76m



## One244

4 2 2

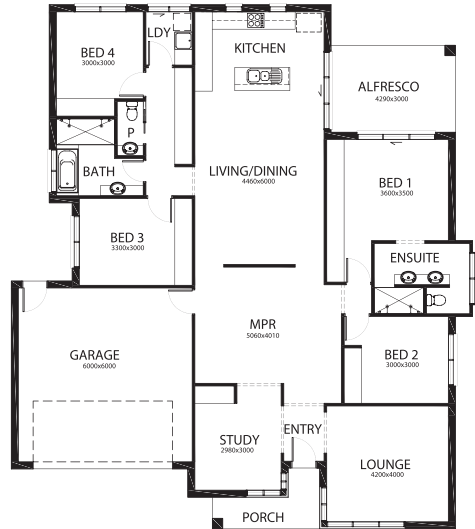


### Features

- 4 Bedrooms
- Large Living Dining Area
- Double Lock-Up Garage
- Ensuite
- Outdoor Alfresco
- Separate Lounge & Study Room

### Area Specifications

<b>Living Area:</b>	186.36m <sup>2</sup>
<b>Porch:</b>	5.13m <sup>2</sup>
<b>Garage:</b>	40.00m <sup>2</sup>
<b>Alfresco:</b>	12.87m <sup>2</sup>
<b>Total Area:</b>	244.36m <sup>2</sup>
<b>Width:</b>	15.91m
<b>Depth:</b>	18.08m



## One257

4 2 2

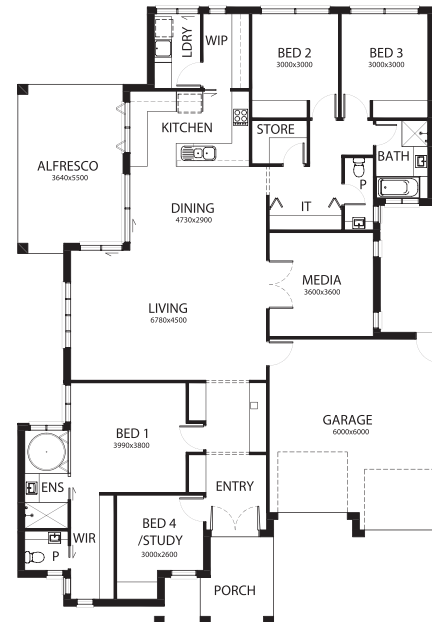


### Features

- 4 Bedrooms
- Large Living & Dining Area
- Double Lock-Up Garage
- Ensuite & WIR
- Outdoor Alfresco
- IT Nook & Media Room

### Area Specifications

<b>Living Area:</b>	186.71m <sup>2</sup>
<b>Porch:</b>	7.38m <sup>2</sup>
<b>Garage:</b>	42.48m <sup>2</sup>
<b>Alfresco:</b>	20.58m <sup>2</sup>
<b>Total Area:</b>	257.15m <sup>2</sup>
<b>Width:</b>	14.94m
<b>Depth:</b>	20.74m



# Four Bedroom

## One267

4  2  2 

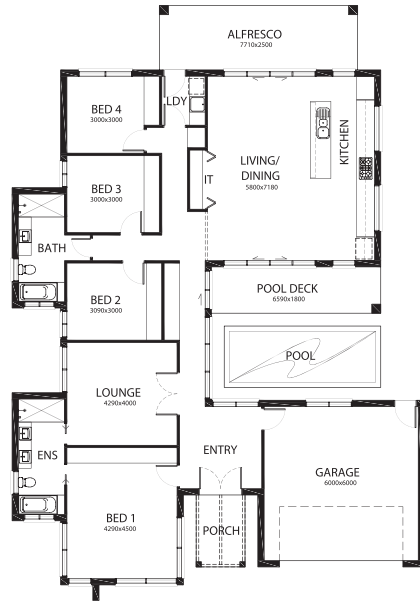


### Features

- 4 Bedrooms
- Large Living & Dining Area
- Double Lock-Up Garage
- Ensuite
- Outdoor Alfresco & Swimming Pool
- IT Nook & Seperate Lounge

### Area Specifications

<b>Living Area:</b>	189.65m <sup>2</sup>
<b>Porch:</b>	5.32m <sup>2</sup>
<b>Garage:</b>	41.44m <sup>2</sup>
<b>Alfresco:</b>	19.28m <sup>2</sup>
<b>Pool Deck:</b>	11.86m <sup>2</sup>
<b>Total Area:</b>	267.55m <sup>2</sup>
<b>Width:</b>	16.04m
<b>Depth:</b>	23.13m



## One291

4  2  2 

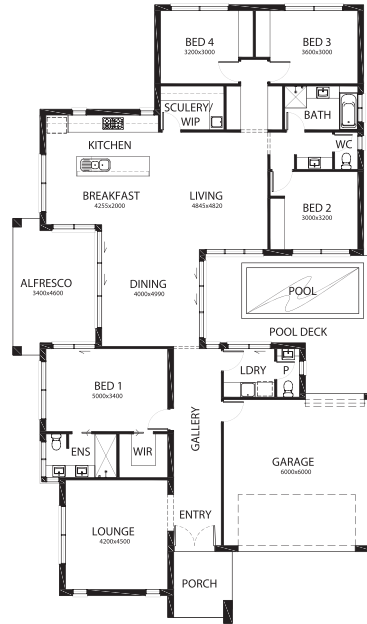


### Features

- 4 Bedrooms
- Large Living and Dining Area
- Ensuite
- Outdoor Alfresco & Swimming Pool
- Seperate Lounge

### Area Specifications

<b>Living Area:</b>	207.85m <sup>2</sup>
<b>Porch:</b>	6.48m <sup>2</sup>
<b>Garage:</b>	40.50m <sup>2</sup>
<b>Alfresco:</b>	16.75m <sup>2</sup>
<b>Total Area:</b>	291.19m <sup>2</sup>
<b>Width:</b>	14.87m
<b>Depth:</b>	25.12m



## One299

4  2  2 



### Features

- 4 Bedrooms
- Living and Dining Areas
- Double Lock-Up Garage
- Outdoor Alfresco
- Ensuite & WIR
- Seperate Media Room & Lounge

### Area Specifications

<b>Living Area:</b>	235.61m <sup>2</sup>
<b>Porch:</b>	4.37m <sup>2</sup>
<b>Garage:</b>	44.15m <sup>2</sup>
<b>Alfresco:</b>	14.91m <sup>2</sup>
<b>Total Area:</b>	299.04m <sup>2</sup>
<b>Width:</b>	15.79m
<b>Depth:</b>	24.46m



# Four Bedroom

## One350

4 2 2

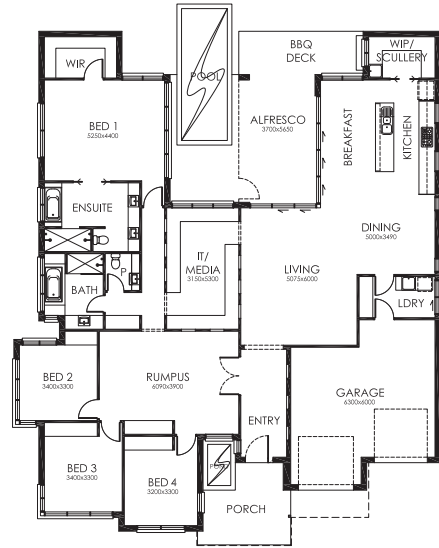


### Features

- 4 Bedrooms
- Living/Kitchen/Dining Area
- Double Lock-Up Garage
- Ensuite & WIR
- Outdoor Alfresco & Swimming Pool
- IT/Media Room

### Area Specifications

<b>Living Area:</b>	259.33m <sup>2</sup>
<b>Porch:</b>	11.81m <sup>2</sup>
<b>Garage:</b>	41.60m <sup>2</sup>
<b>Alfresco:</b>	38.19m <sup>2</sup>
<b>Total Area:</b>	350.93m <sup>2</sup>
<b>Width:</b>	18.63m
<b>Depth:</b>	22.43m



## Prospect

4 2 2

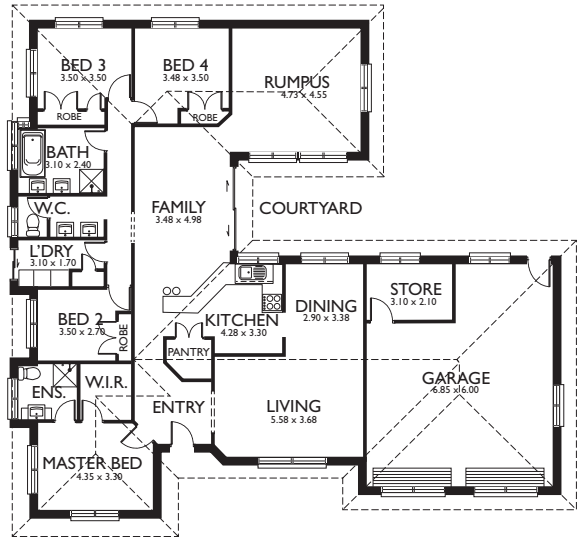


### Features

- 4 Bedrooms
- Open Plan
- Ensuite and Walk in Robe
- Courtyard

### Area Specifications

<b>Living Area:</b>	196.6m <sup>2</sup>
<b>Verandah Area:</b>	0.0m <sup>2</sup>
<b>Carpport Area:</b>	61.9m <sup>2</sup>
<b>Frontage:</b>	20.02m <sup>2</sup>
<b>Total Area:</b>	258.5m <sup>2</sup> 27.83Squares



## Riverside

4 2 2

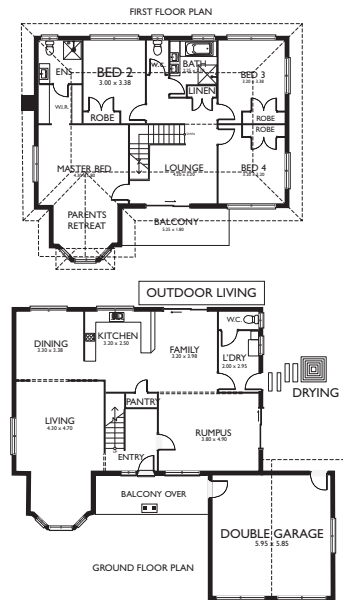


### Features

- 4 Bedrooms
- Open Plan Living
- Parents Retreat
- Downstairs Entertaining

### Area Specifications

<b>Living Area (G.FL):</b>	111.92m <sup>2</sup>
<b>Living Area (F.FL):</b>	111.92m <sup>2</sup>
<b>Patio Area (G.FL):</b>	9.45m <sup>2</sup>
<b>Balcony Area (F.FL):</b>	9.45m <sup>2</sup>
<b>Carpport Area:</b>	40.20m <sup>2</sup>
<b>Frontage:</b>	15.85m
<b>Total Area:</b>	282.94m <sup>2</sup> 30.45Squares



# Four Bedroom

## Ross

4 2 2

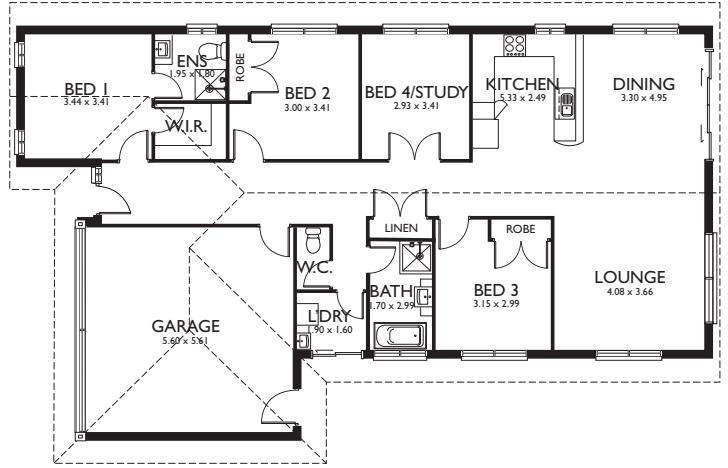


### Features

- 4 Bedrooms
- Separate Laundry
- Open Plan Living
- Ensuite & Walk in Robe

### Area Specifications

**Living Area:** 141.25m<sup>2</sup>  
**Porch Area:** 0.54m<sup>2</sup>  
**Carpport Area:** 34.56m<sup>2</sup>  
**Frontage:** 11.35m  
**Total Area:** 176.35m<sup>2</sup>  
 18.98Squares



## Sassafras

4 2 2

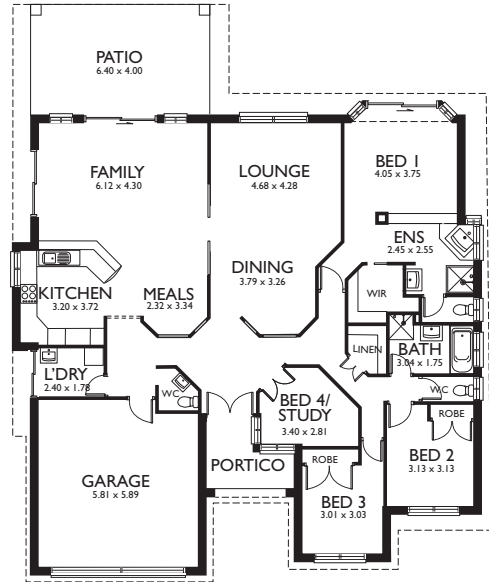


### Features

- 4 Bedrooms
- Patio
- Open Plan Living
- Ensuite & Walk in Robe

### Area Specifications

**Living Area:** 200.19m<sup>2</sup>  
**Patio Area:** 25.60m<sup>2</sup>  
**Portico Area:** 7.75m<sup>2</sup>  
**Carpport Area:** 37.04m<sup>2</sup>  
**Frontage:** 16.67m  
**Total Area:** 270.58m<sup>2</sup>  
 29.11Squares



## Sheffield

4 2 2

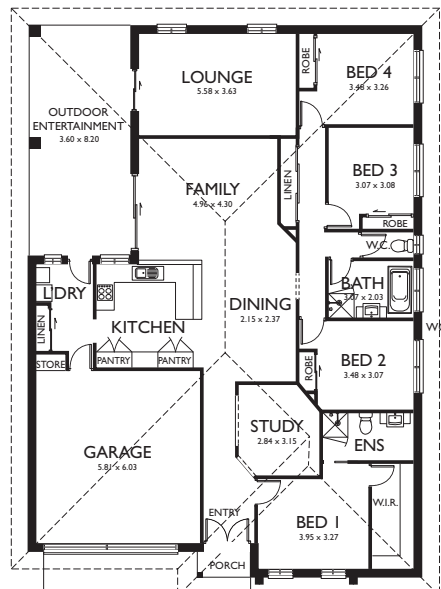


### Features

- 4 Bedrooms
- Outdoor Entertainment
- Study
- Ensuite & Walk in Robe

### Area Specifications

**Living Area:** 190.89m<sup>2</sup>  
**Patio Area:** 29.52m<sup>2</sup>  
**Porch Area:** 1.91m<sup>2</sup>  
**Garage Area:** 37.32m<sup>2</sup>  
**Frontage:** 13.77m  
**Total Area:** 299.04m<sup>2</sup>  
 27.94Squares





## Strahan

4  2  

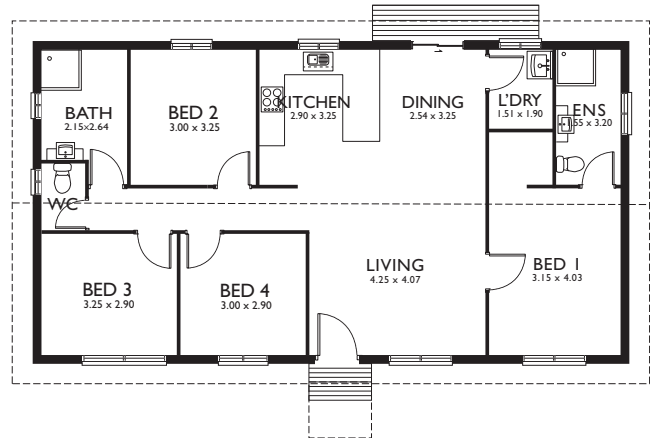


### Features

- 4 Bedrooms
- Separate Laundry
- Open Plan Living
- Ensuite & Walk in Robe

### Area Specifications

<b>Living Area:</b>	105.8m <sup>2</sup>
<b>Verandah Area:</b>	0.0m <sup>2</sup>
<b>Carpport Area:</b>	0.0m <sup>2</sup>
<b>Frontage:</b>	14.1m <sup>2</sup>
<b>Total Area:</b>	105.8m <sup>2</sup>



## Two291

4  2  2 

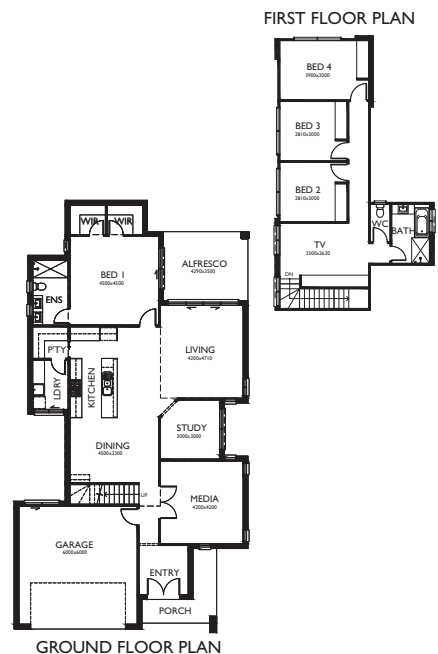


### Features

- 4 Bedrooms
- Living and Dining Areas
- Double Lock-Up Garage
- Ensuite & WIR
- Outdoor Alfresco
- Media & Study Room

### Area Specifications

<b>GF Living Area:</b>	151.22m <sup>2</sup>
<b>FF Living Area:</b>	76.26m <sup>2</sup>
<b>Porch:</b>	7.82m <sup>2</sup>
<b>Garage:</b>	40.75m <sup>2</sup>
<b>Alfresco:</b>	15.02m <sup>2</sup>
<b>Total Area:</b>	291.07m <sup>2</sup>
<b>Width:</b>	11.86m
<b>Depth:</b>	21.75m



## Westbury

4  2  2 

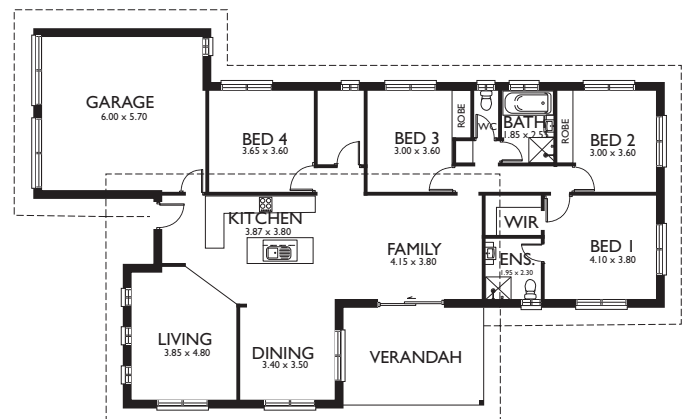


### Features

- 4 Bedrooms
- Verandah
- Open Plan Living
- Ensuite & Walk in Robe

### Area Specifications

<b>Living Area:</b>	158.6m <sup>2</sup>
<b>Verandah Area:</b>	18.5m <sup>2</sup>
<b>Carpport Area:</b>	36.6m <sup>2</sup>
<b>Frontage:</b>	13.345m
<b>Total Area:</b>	213.7m <sup>2</sup>



## One193

Modern



4 2 2

### Features

- 4 Bedrooms
- Large Kitchen/Living/Dining Area
- Double Lock-Up Garage
- Ensuite and WIR
- Great Lounge
- Large Outdoor Alfresco

### Area Specifications

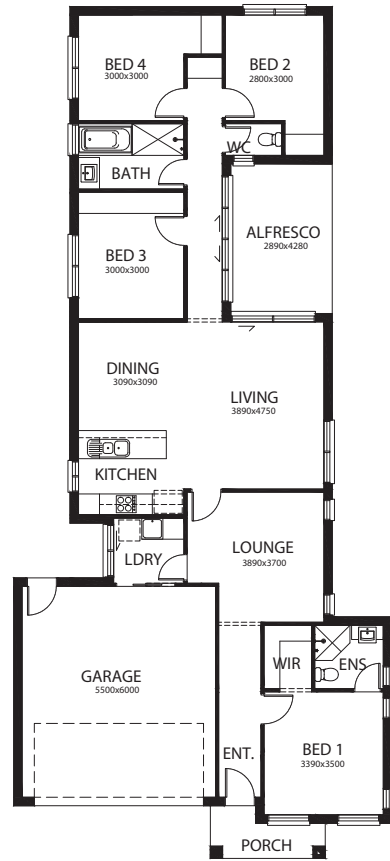
- Living Area: 140.63m<sup>2</sup>
- Porch: 3.92m<sup>2</sup>
- Garage: 36.44m<sup>2</sup>
- Alfresco: 12.30m<sup>2</sup>
- Total: 193.29m<sup>2</sup>
- Width: 10.75m
- Depth: 24.23m



Traditional



Skillion



## One172

Modern



4 2 1

### Features

- 4 Bedrooms
- Large Kitchen/Living/Dining Area
- Great Lounge
- Single Lock-up Garage
- Ensuite & WIR
- Outdoor Alfresco

### Area Specifications

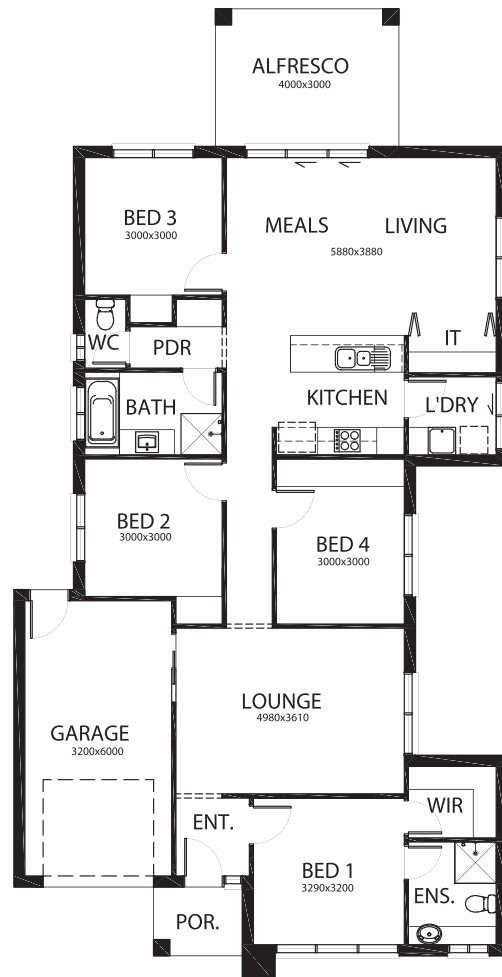
- Living Area: 135.15m<sup>2</sup>
- Porch: 2.90m<sup>2</sup>
- Garage: 21.83m<sup>2</sup>
- Alfresco: 12.00m<sup>2</sup>
- Total: 171.88m<sup>2</sup>
- Width: 10.75m
- Depth: 20.64m



Traditional



Skillion



# Introducing our modular range



## 1 Bed - 1 Arthur

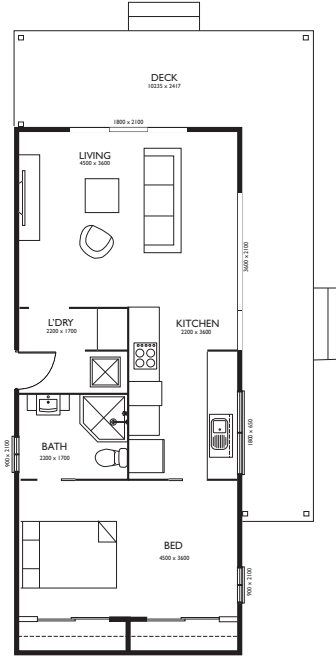


### Features

- 1 Bedroom
- Living & Kitchen
- Bath

### Area Specifications

**Living Area:** 48.6m<sup>2</sup>  
**Deck Area:** 24.74m<sup>2</sup>  
**Width:** 4.5m  
**Depth:** 10.8m



## 1 Bed - 2 - Pieman

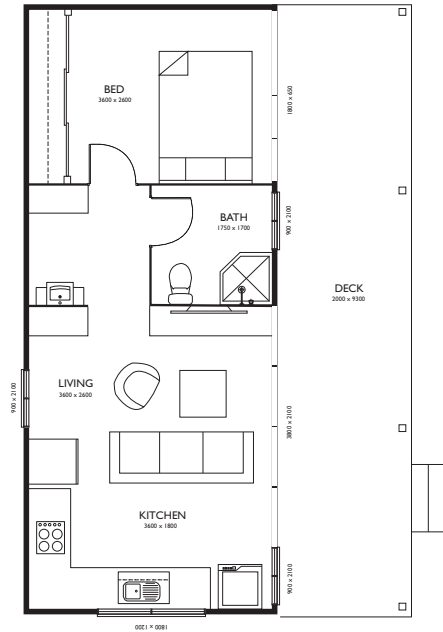


### Features

- 1 Bedroom
- Living & Kitchen
- Bath

### Area Specifications

**Living Area:** 32.4m<sup>2</sup>  
**Deck Area:** 18.6m<sup>2</sup>  
**Width:** 3.6m  
**Depth:** 9.0m



## 1 Bed - 3 - Cascade

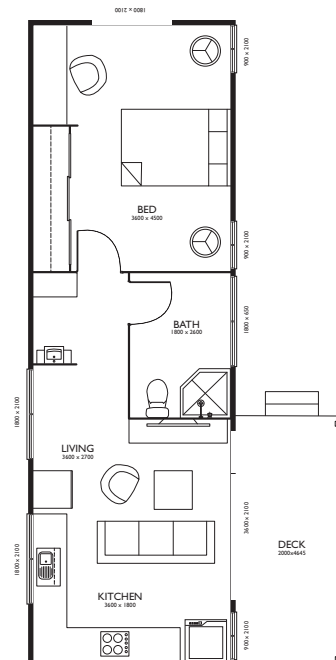


### Features

- 1 Bedroom
- Living & Kitchen
- Bath

### Area Specifications

**Living Area:** 42.1m<sup>2</sup>  
**Deck Area:** 9.3m<sup>2</sup>  
**Width:** 3.6m  
**Depth:** 11.7m



## 2 Bed - 1 - Franklin

2  1 

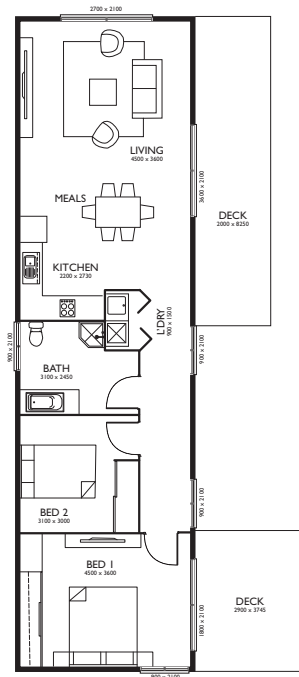


### Features

- 2 Bedroom
- Living & Kitchen
- Bath

### Area Specifications

**Living Area:** 83.29m<sup>2</sup>  
**Deck Area:** 27.3m<sup>2</sup>  
**Width:** 4.79m  
**Depth:** 17.39m



## 2 Bed - 2 - Meander

2  1 

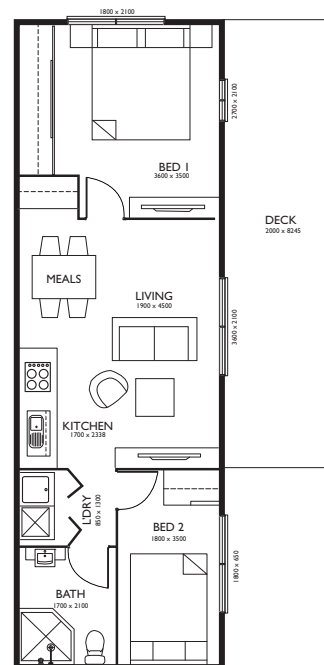


### Features

- 2 Bedroom
- Living & Kitchen
- Bath

### Area Specifications

**Living Area:** 46.64m<sup>2</sup>  
**Deck Area:** 16.5m<sup>2</sup>  
**Width:** 3.89m  
**Depth:** 11.99m



## 2 Bed - 3 - Houn

2  1 

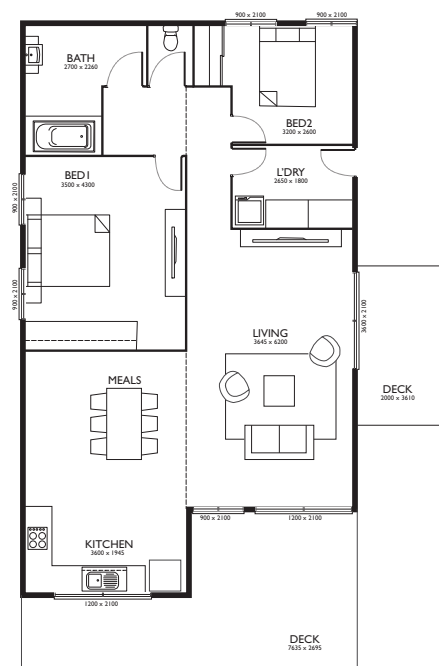


### Features

- 2 Bedroom
- Living & Kitchen
- Bath

### Area Specifications

**Living Area:** 112.15m<sup>2</sup>  
**Deck Area:** 19.8m<sup>2</sup>  
**Width:** 7.63m  
**Depth:** 14.69m



## 3 Bed - 1 - Tamar

3  1 

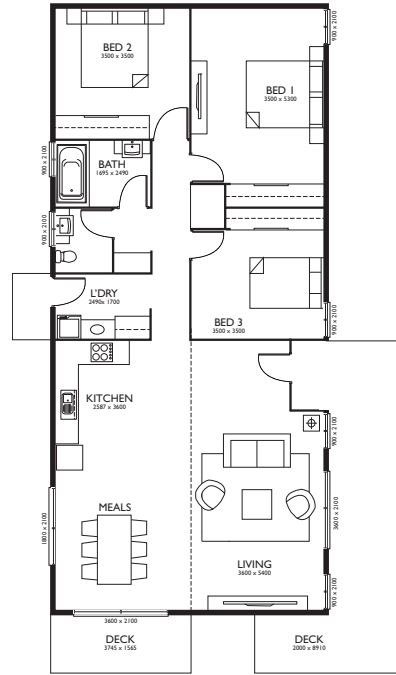


### Features

- 3 Bedroom
- Living & Kitchen
- Bath

### Area Specifications

**Living Area:** 123.5m<sup>2</sup>  
**Deck Area:** 23.6m<sup>2</sup>  
**Width:** 7.49m  
**Depth:** 16.49m



## 3 Bed - 2 - Gordon

3  1 

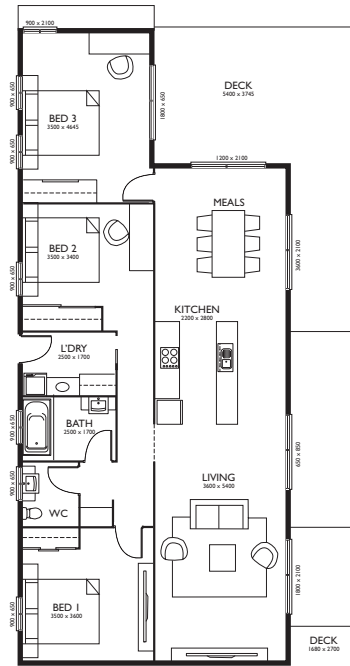


### Features

- 3 Bedroom
- Living & Kitchen
- Bath

### Area Specifications

**Living Area:** 117.31m<sup>2</sup>  
**Deck Area:** 32.4m<sup>2</sup>  
**Width:** 7.49m  
**Depth:** 17.53m



## 3 Bed - 3 - Derwen

3  1 

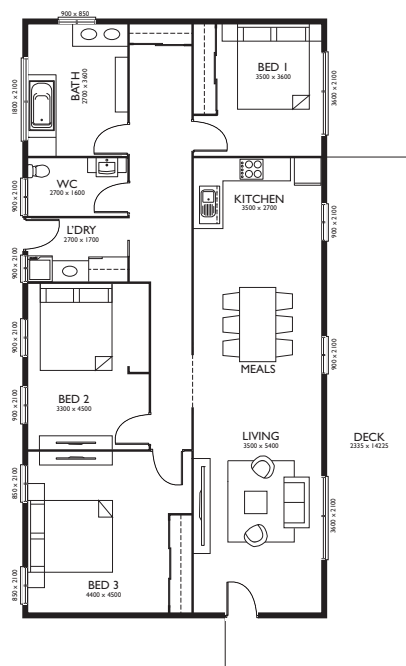


### Features

- 3 Bedroom
- Living & Kitchen
- Bath

### Area Specifications

**Living Area:** 138.3m<sup>2</sup>  
**Deck Area:** 37.4m<sup>2</sup>  
**Width:** 8.39m  
**Depth:** 16.49m







# HOMES4YOU

YOUR HOME, YOUR CHOICE

[www.homes4you.com.au](http://www.homes4you.com.au)

Email: [sales@homes4you.com.au](mailto:sales@homes4you.com.au)